

Elevation C

Elevation A

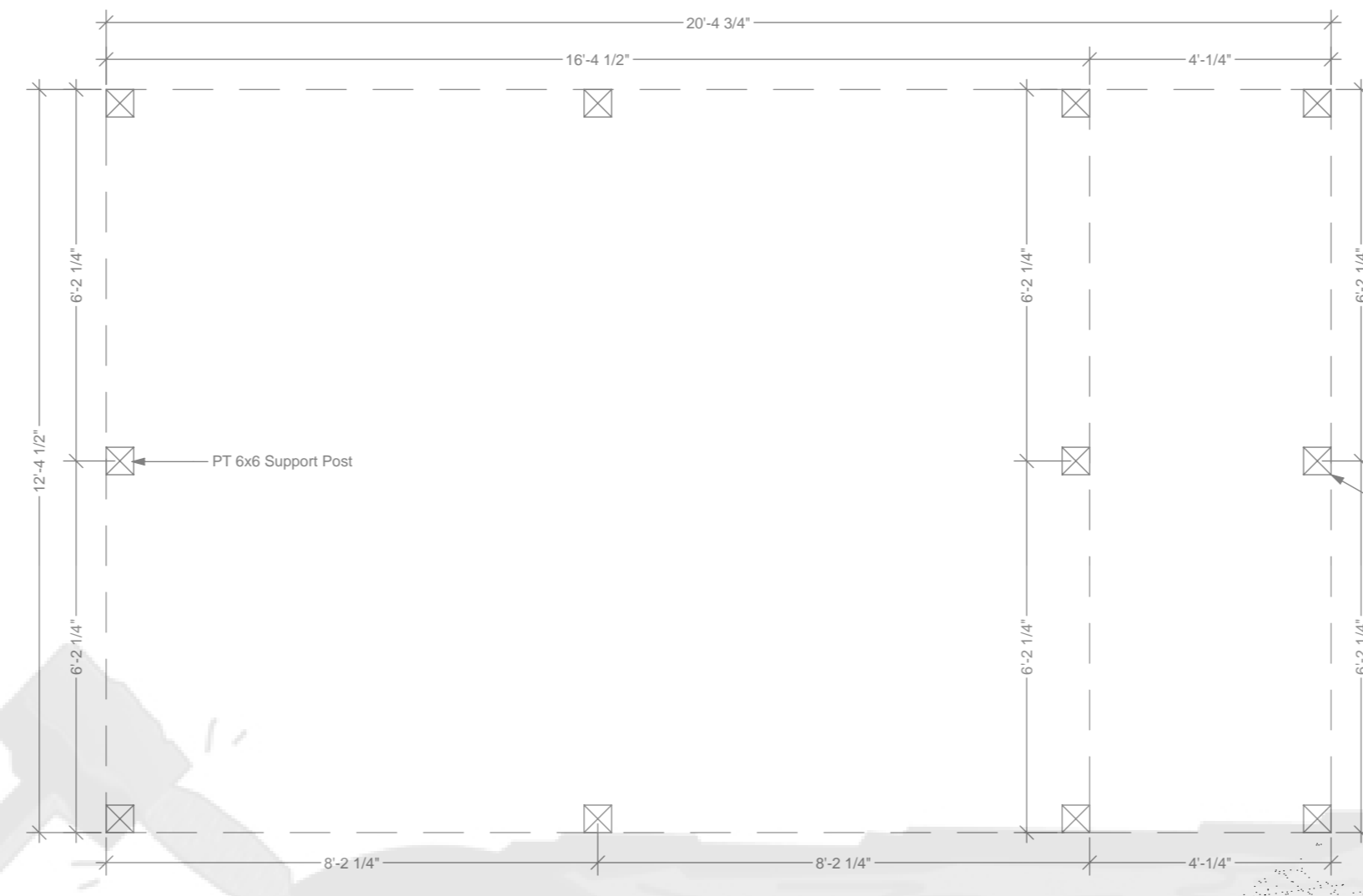
All Materials For Exterior Stairs
And Stair Railings By Others

Window Schedule			Color	Sandtone
Quantity	ID	R.O.		
2	244GW3030	3'-0" X 3'-0"		
2	244GW5040	5'-0" X 4'-0"		

Door Schedule	
Qty	Doors
1	S262-3068 R

1. Floor Plan

SCALE: 3/8" = 1'-0"



Dashed Line Represents Outside Of Floor Frame

PT 6x6x8' Posts Supplied. Posts Should Be Set On
A Concrete Footing At A Point Below The Frost Line

Porch Supports Need To Be 1 3/8"
Higher Than House Supports

Foundation Plan

SCALE: 3/8" = 1'-0"

Notice: Building Design To Meet
The Following Load Conditions:
1st Floor: 40# /Ft. Live Load
2nd Floor: 30# /Ft. Live Load
Roof System 70# /Ft. Ground Snow Load
Wind Load: 70 MPH, Exposure "B"

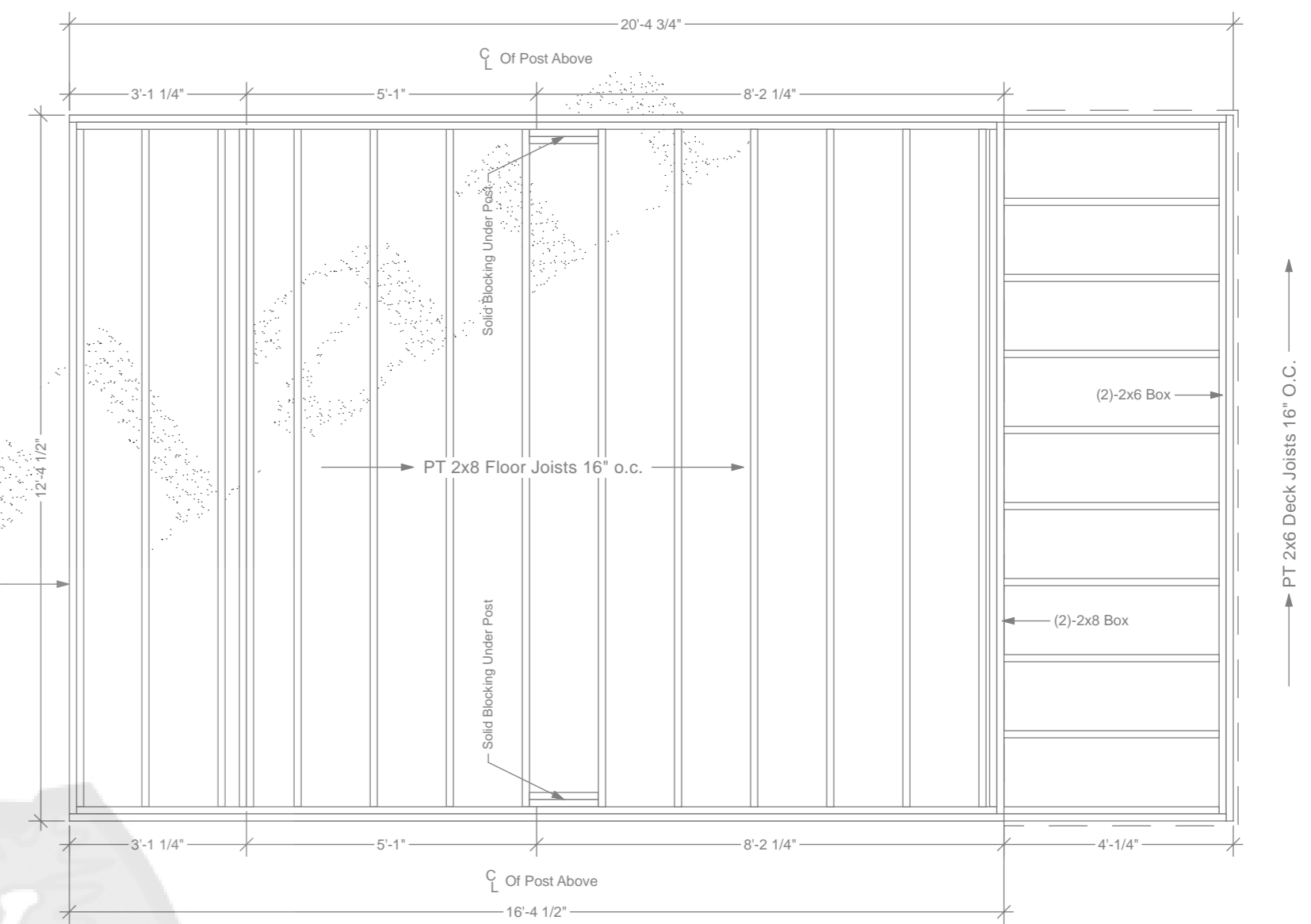
Above Weight Loads Are Based On Normal Materials
Supplied By Coventry Log Homes. Any Variance Of
"Size Or Spacing" May Affect Weight Loads.

Notice: To Comply With Local Codes These
Construction Requirements Must Be Met.
Roof Insulation _____ Min.
Floor Insulation _____ Min.
(Not Required If Foundation Walls Are Insulated)
Foundation Insulation _____ Min.
(Not Required If 1st Floor Is Insulated.)
Glazing: High Performance
Storms _____

Building Is Designed In Accordance
With ICC-400 Log Standard 2007

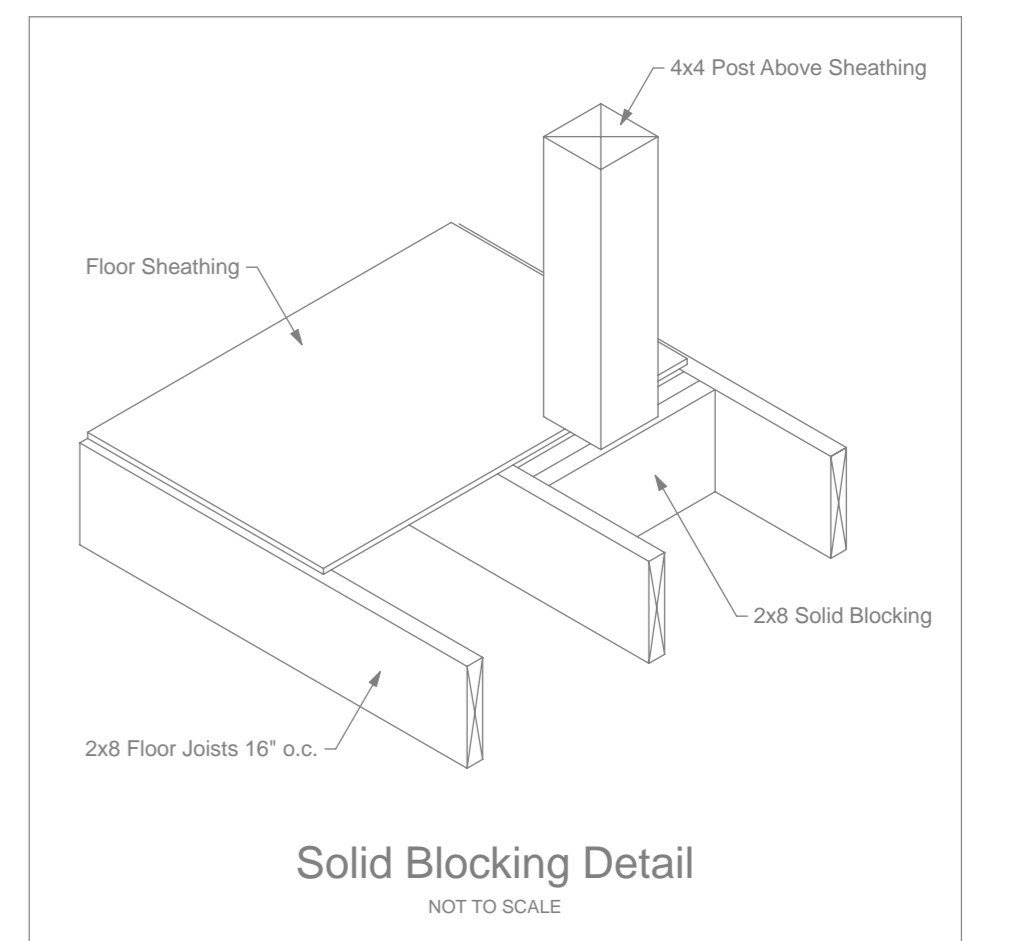
Logs Are "Wall Grade" Eastern White Pine, Graded
In Accordance With "Log Homes Council" Standards

Average Moisture Content Of Logs Is 19% Or Less
Per LHC Grading Manual



Floor Frame Notes

- Support Posts By Others
- (2)-PT 2x8 Box For Floor System
- PT 2x8 Floor Joists 16" O.C.
- Solid Blocking Under All Posts
- 5/8" T&G Advantech Subfloor
- 1" V-Match Finished Floor
- PT 2x6 Double Box For Deck
- PT 2x6 Deck Joists 16" O.C.
- PT 5/4" Porch Decking
- Joist Hangers (As Needed) By Others



Solid Blocking Detail

NOT TO SCALE

Floor Frame

SCALE: 3/8" = 1'-0"

This Cabin Is A Recreational Series/No-Change Design. Any Changes Must Be
Made On The Job. Consult Your Local Codes Before Making Any Changes.

Coventry Log Homes

Important Note:
The Builder Must Review The Price Quote List To Determine The List Of Materials Being
Purchased From Coventry Log Homes. Any Other Materials Required To Build The Log
Home But Not Listed On The Price Quote Are To Be Supplied By The Builder Or Customer.
Refer To Your Construction Manual For Specific Details. Coventry Log Homes
Recommends Owner & Builder Read And Review Before Starting Construction.

Copyright 2011 All Rights Reserved. These Plans Are Designed And Intended For The
Sole Use Of Constructing A Log Home Package Supplied By Coventry Log Homes, Inc.

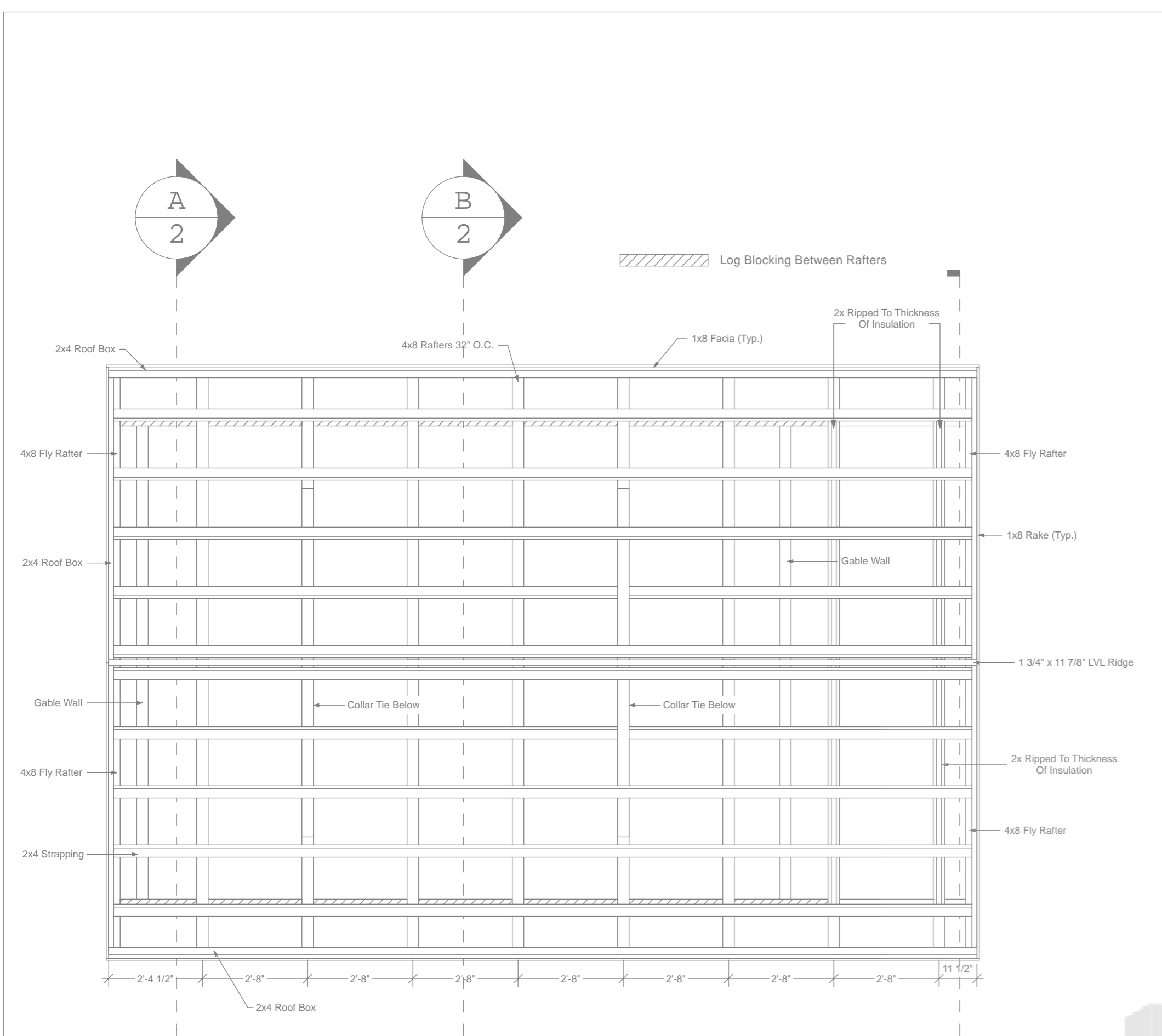
Owner Should Check All Dimensions. Do Not Build
From These Plans. Use Final Plans Only



108 South Court Street
Woodsville N.H. 03785
www.coventryloghomes.com
Phone 1-(603)-747-8177
Toll Free 1-(800)-308-7505
Fax 1-(603)-747-3340

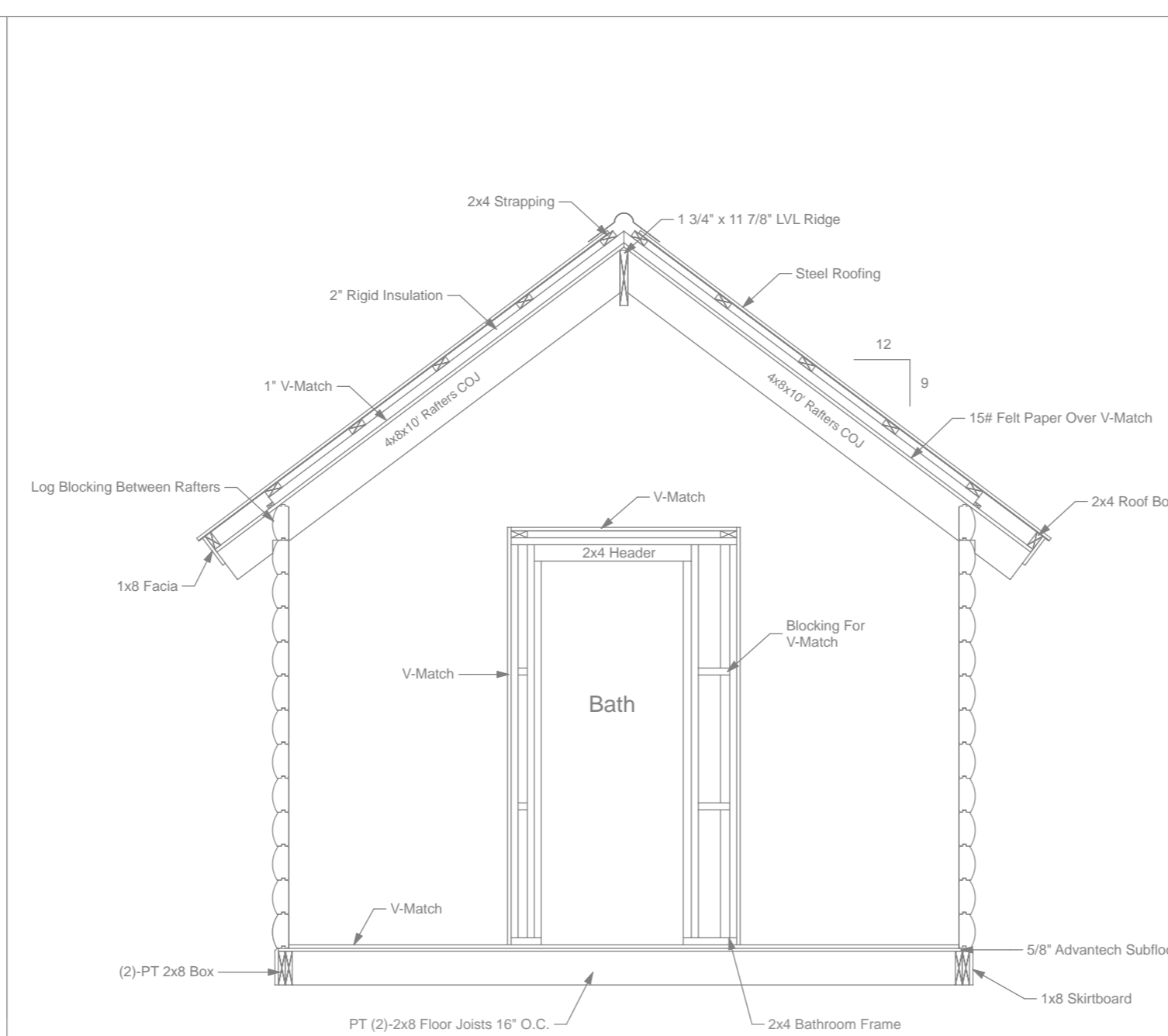
Customer	Customer
Design	Standard Getaway
Date	February 28, 2011

Site Location:	Unknown
House: 13 Log Rows	9/12 Roof Pitch
Scale	1/4" = 1'
Unless Noted Otherwise	

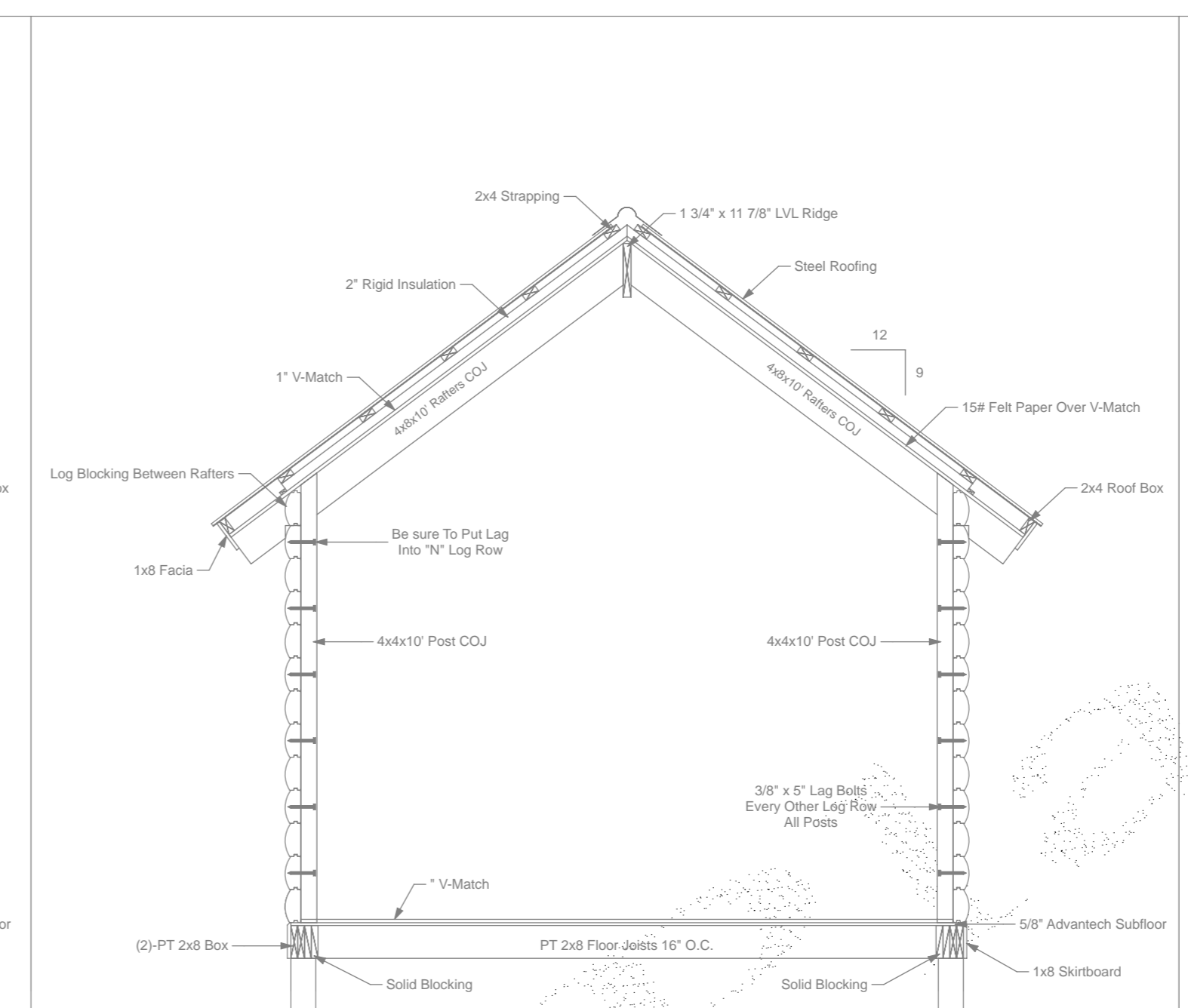


- Roof Frame Notes**
- 4x8 Rafter 32" O.C.
 - 1" V-Match Ceiling
 - 15# Felt Paper Over V-Match
 - 2x4 Box For Roof
 - 2" Rigid Insulation
 - 2x4 Strapping
 - 1x8" Facia House
 - Porch Ceiling T&G Pine

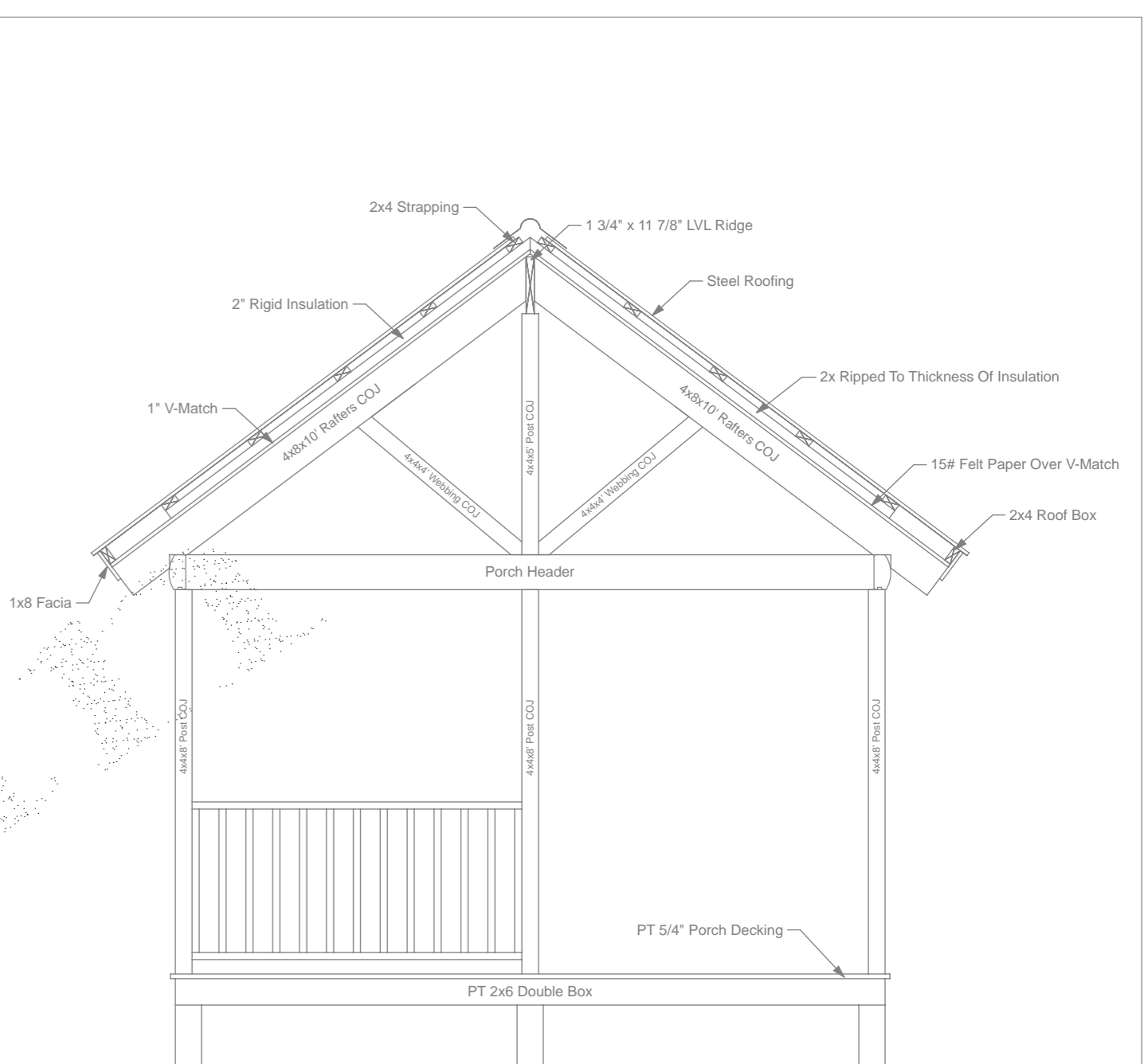
Roof Frame
SCALE: 3/8" = 1'-0"



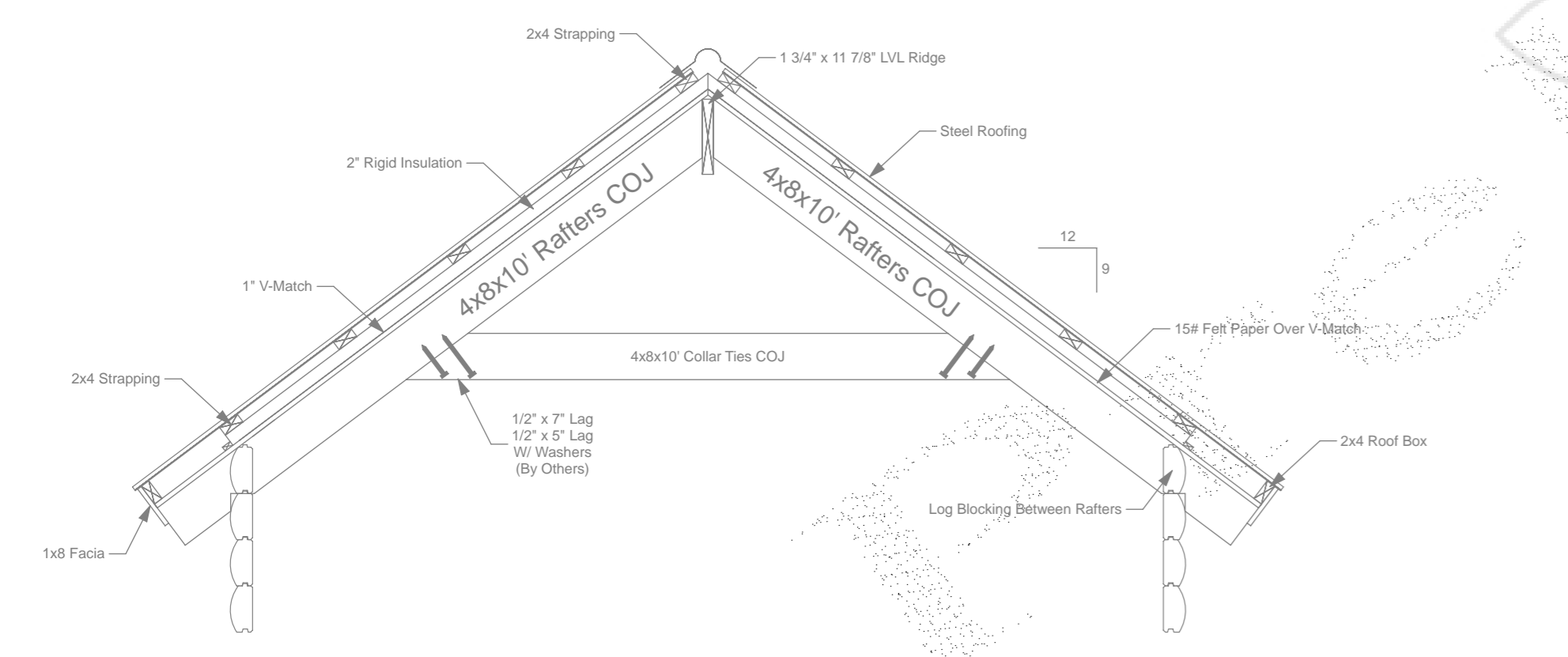
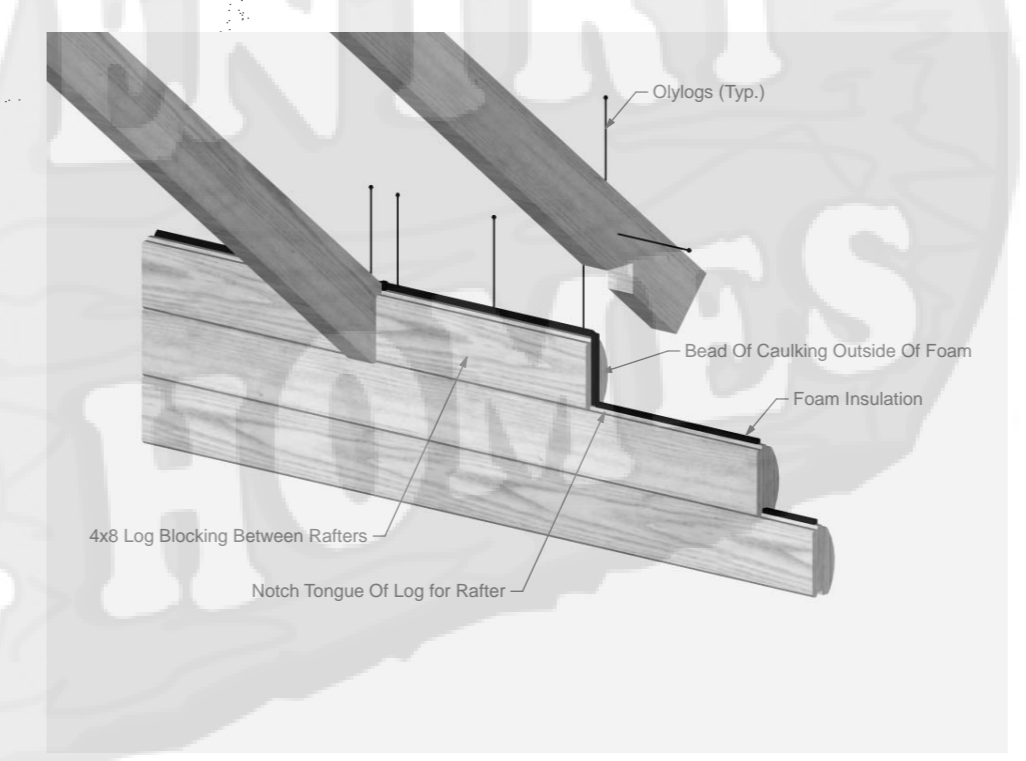
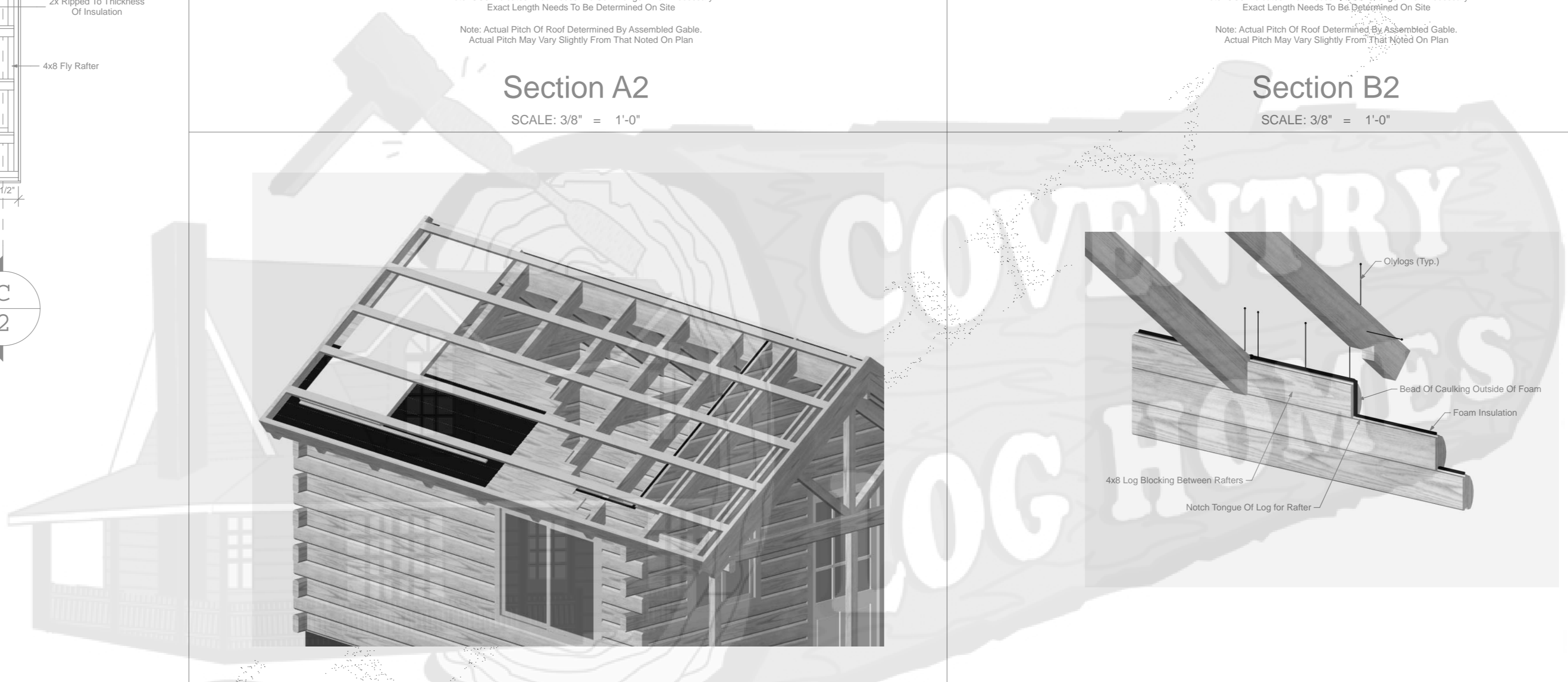
Section A2
SCALE: 3/8" = 1'-0"



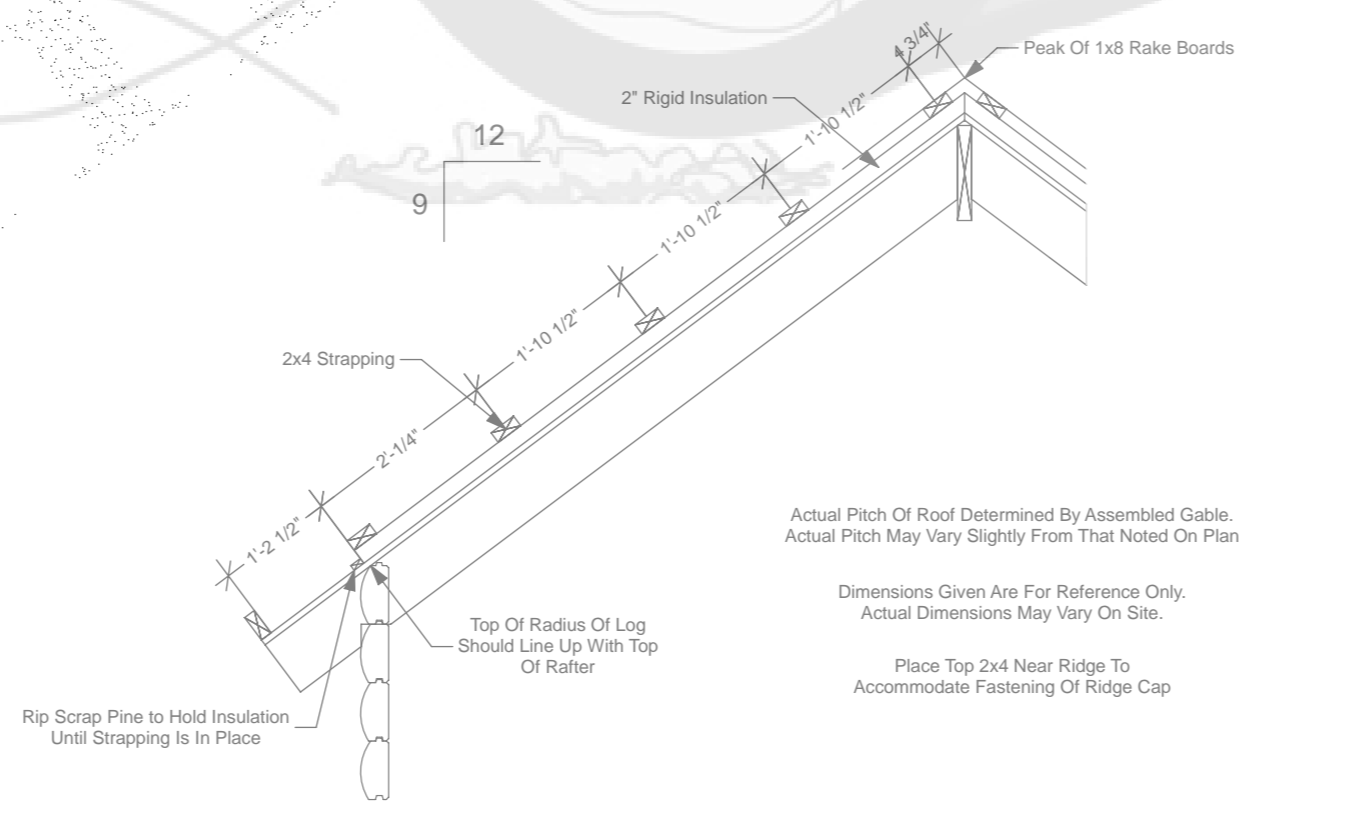
Section B2
SCALE: 3/8" = 1'-0"



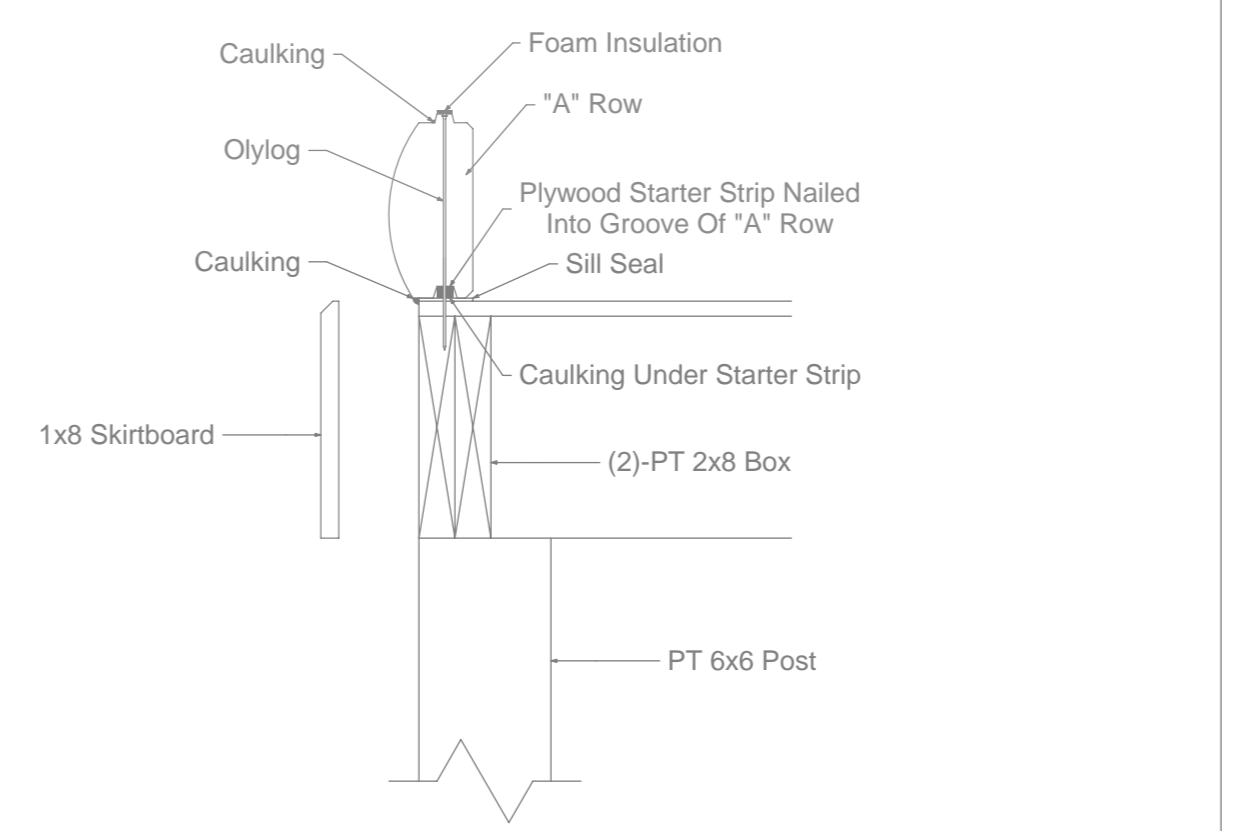
Section C2
SCALE: 3/8" = 1'-0"



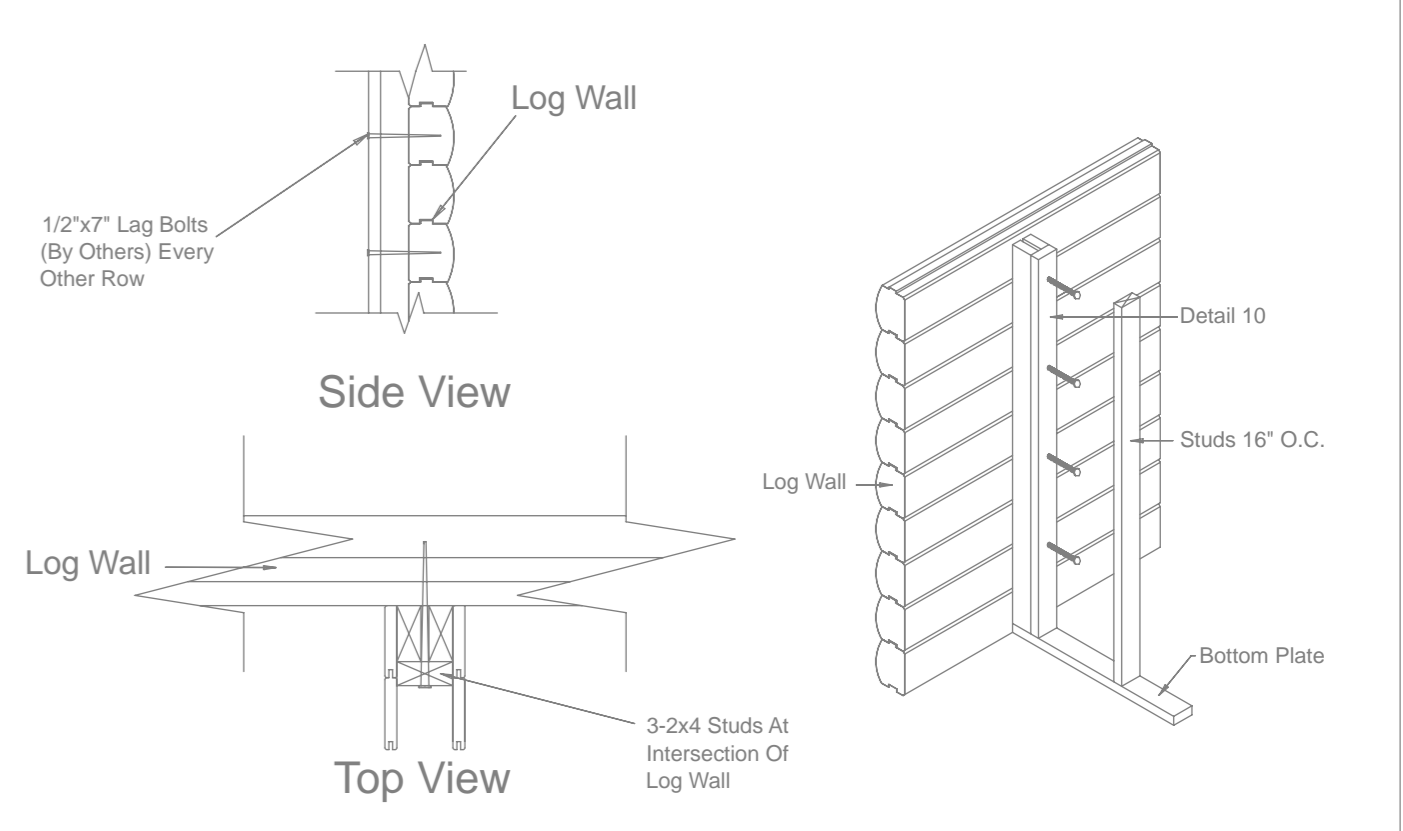
Collar Tie Detail
SCALE: 1/2" = 1'-0"



Strapping Detail
SCALE: 1/2" = 1'-0"



Skirboard/'A' Row Detail
SCALE: 1 1/2" = 1'-0"



Detail 10
NOT TO SCALE

This Cabin Is A Recreational Series/No-Change Design. Any Changes Must Be Made On The Job. Consult Your Local Codes Before Making Any Changes.

Coventry Log Homes

Important Note:
The Builder Must Review The Price Quote List To Determine The List Of Materials Being Purchased From Coventry Log Homes. Any Other Materials Required To Build The Log Home But Not Listed On The Price Quote Are To Be Supplied By The Builder Or Customer. Refer To Your Construction Manual For Specific Details. Coventry Log Homes Recommends Owner & Builder Read And Review Before Starting Construction.

Copyright 2011 All Rights Reserved. These Plans Are Designed And Intended For The Sole Use Of Constructing A Log Home Package Supplied By Coventry Log Homes, Inc.
Owner Should Check All Dimensions. Do Not Build From These Plans. Use Final Plans Only



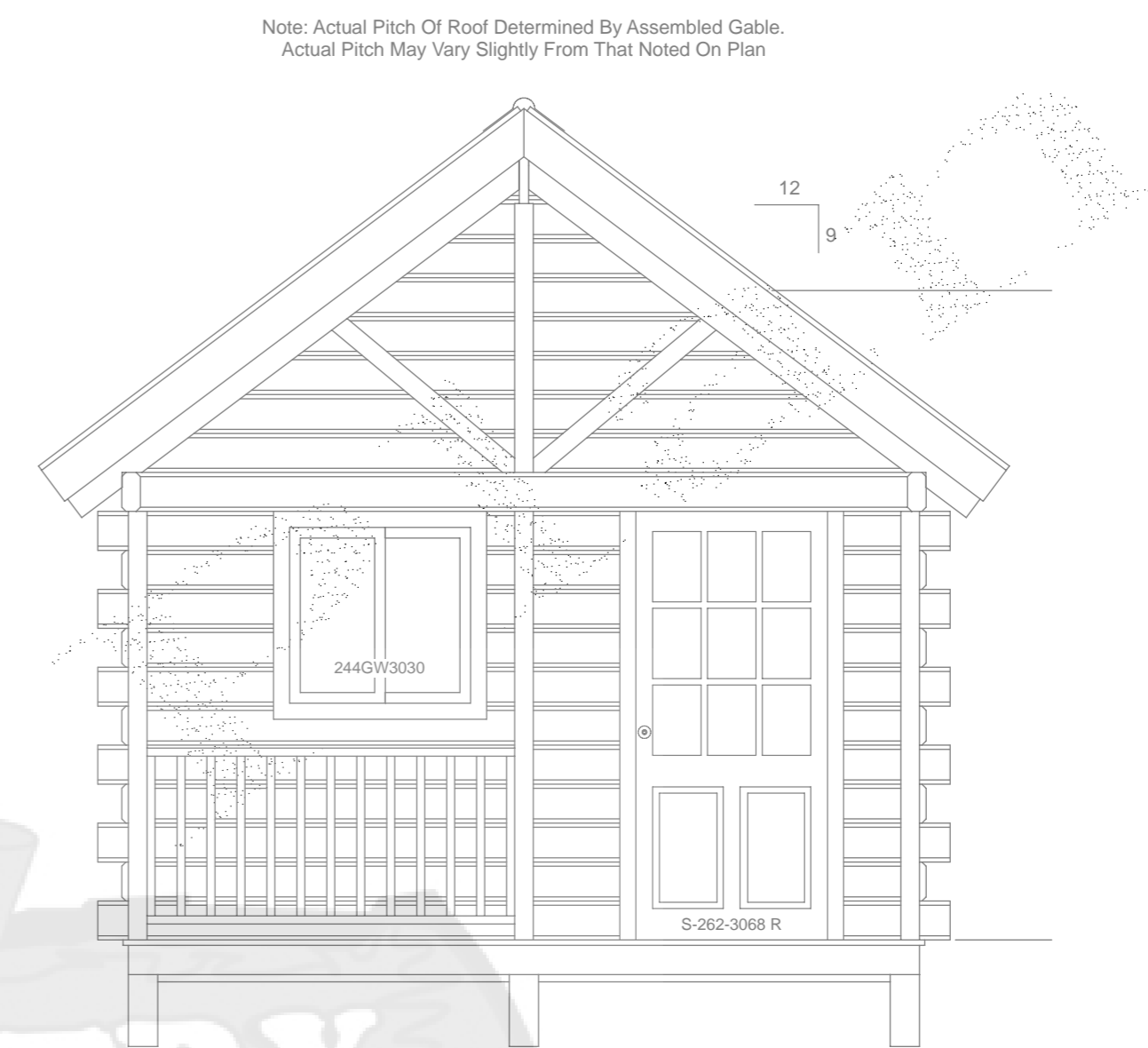
108 South Court Street
Woodsville N.H. 03785
www.coventryloghomes.com
Phone 1-(603)-747-8177
Toll Free 1-(800)-308-7505
Fax 1-(603)-747-3340

Customer	Customer
Design	Standard Getaway
Date	February 28, 2011

Site Location:	Unknown
House: 13 Log Rows	9/12 Roof Pitch
Scale	1/4" = 1'
Unless Noted Otherwise	
PQ #	2011
	Page 2 of 3



ELEVATION A
SCALE: 3/8" = 1'-0"



ELEVATION B
SCALE: 3/8" = 1'-0"

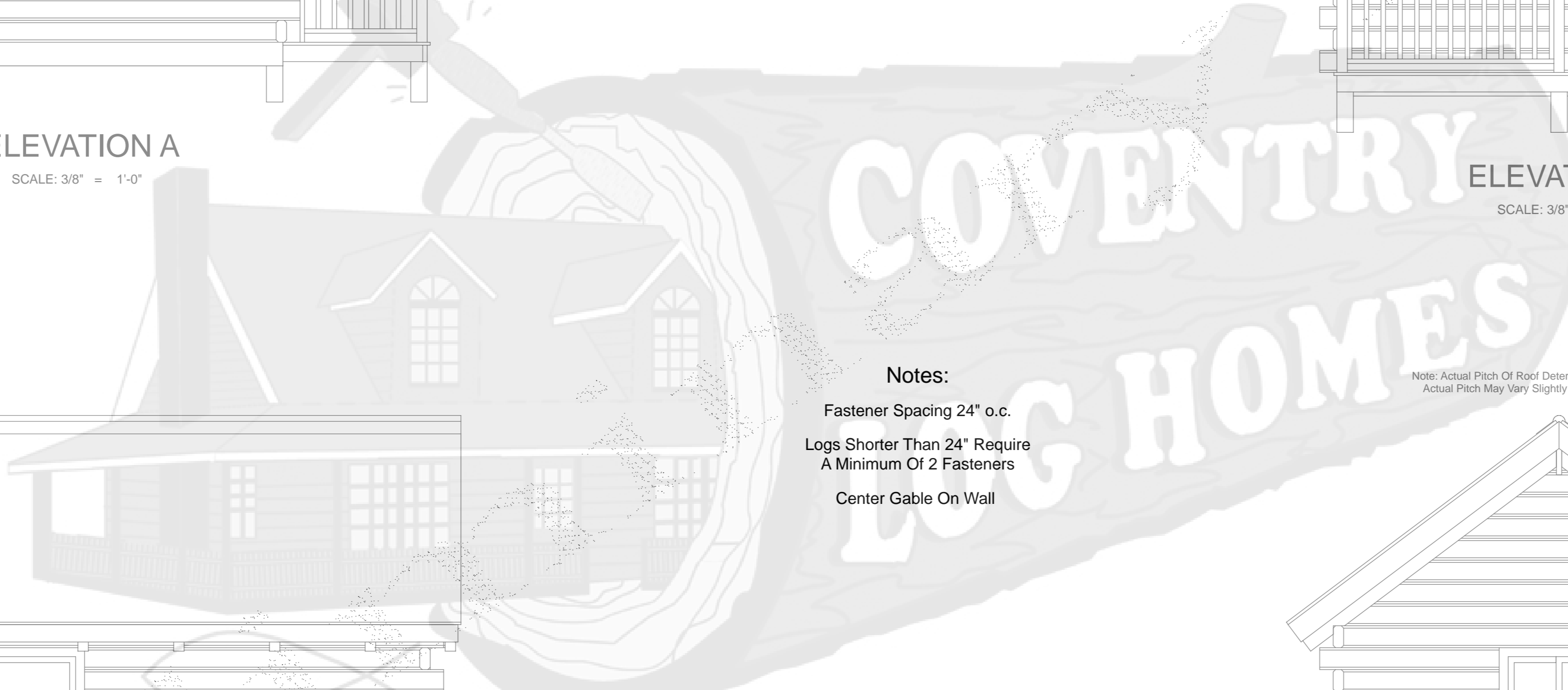


ELEVATION C
SCALE: 3/8" = 1'-0"



ELEVATION D
SCALE: 3/8" = 1'-0"

Notes:
Fastener Spacing 24" o.c.
Logs Shorter Than 24" Require
A Minimum Of 2 Fasteners
Center Gable On Wall



This Cabin Is A Recreational Series/No-Change Design. Any Changes Must Be Made On The Job. Consult Your Local Codes Before Making Any Changes.

Coventry Log Homes

Important Note:
The Builder Must Review The Price Quote List To Determine The List Of Materials Being Purchased From Coventry Log Homes. Any Other Materials Required To Build The Log Home But Not Listed On The Price Quote Are To Be Supplied By The Builder Or Customer. Refer To Your Construction Manual For Specific Details. Coventry Log Homes Recommends Owner & Builder Read And Review Before Starting Construction.

Copyright 2011 All Rights Reserved. These Plans Are Designed And Intended For The Sole Use Of Constructing A Log Home Package Supplied By Coventry Log Homes, Inc.
Owner Should Check All Dimensions. Do Not Build From These Plans. Use Final Plans Only



108 South Court Street
Woodsville N.H. 03785
www.coventryloghomes.com
Phone 1-(603)-747-8177
Toll Free 1-(800)-308-7505
Fax 1-(603)-747-3340

Customer	Customer
Design	Standard Getaway
Date	February 28, 2011

Site Location:	Unknown
House: 13 Log Rows	9/12 Roof Pitch
Scale	1/4" = 1' Unless Noted Otherwise
PQ #	2011
Page 3 of 3	