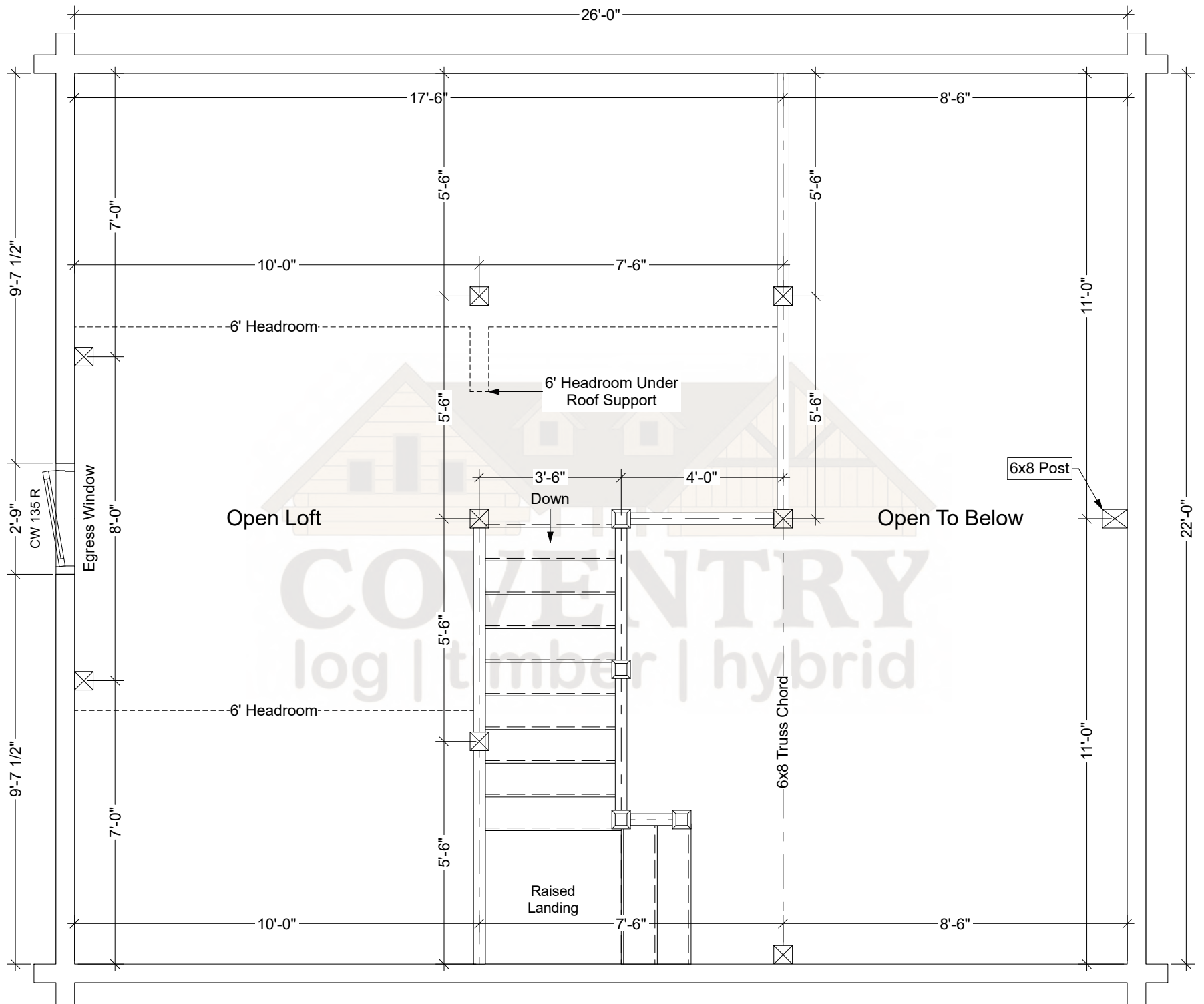
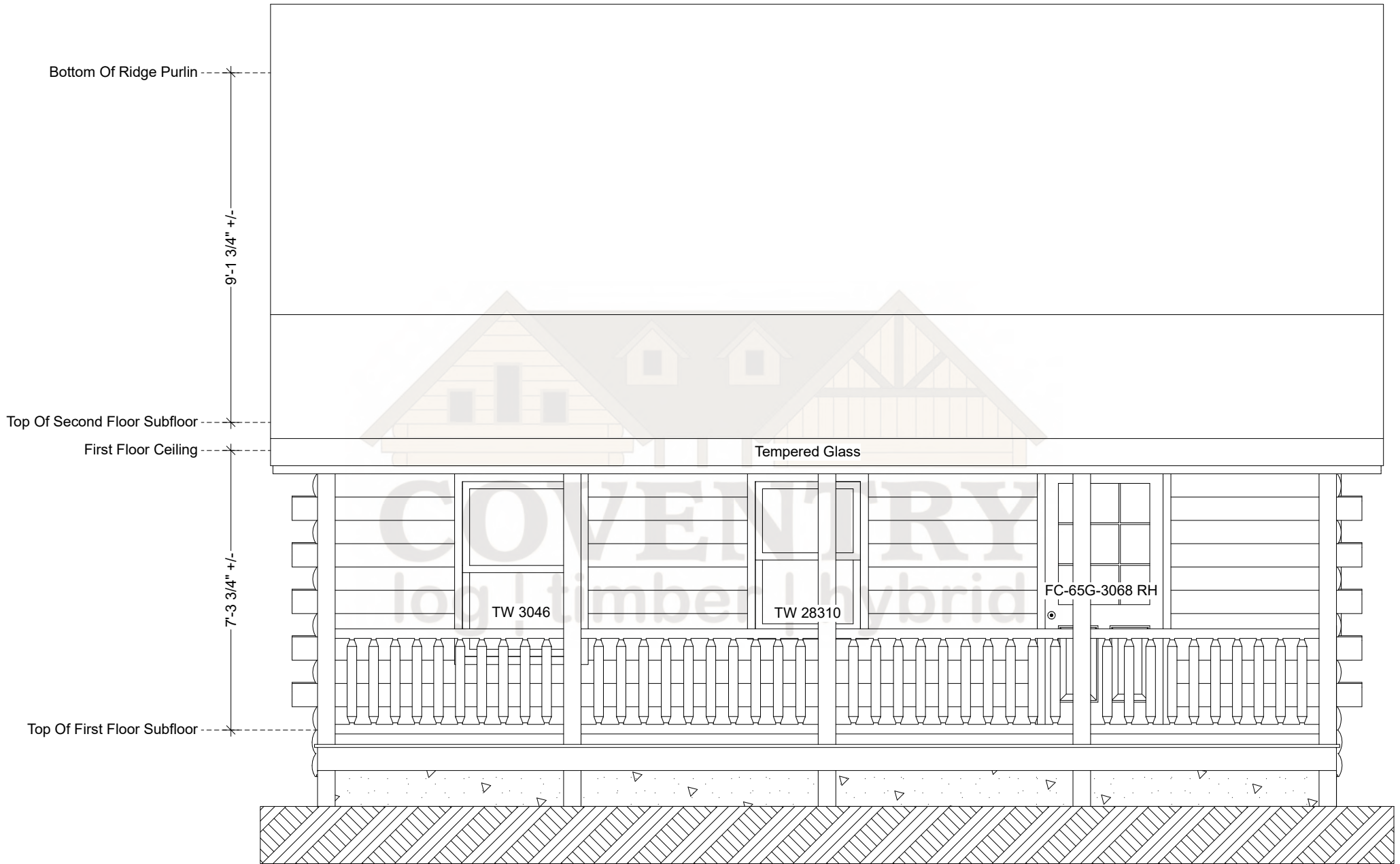


Juniper First Floor Plan

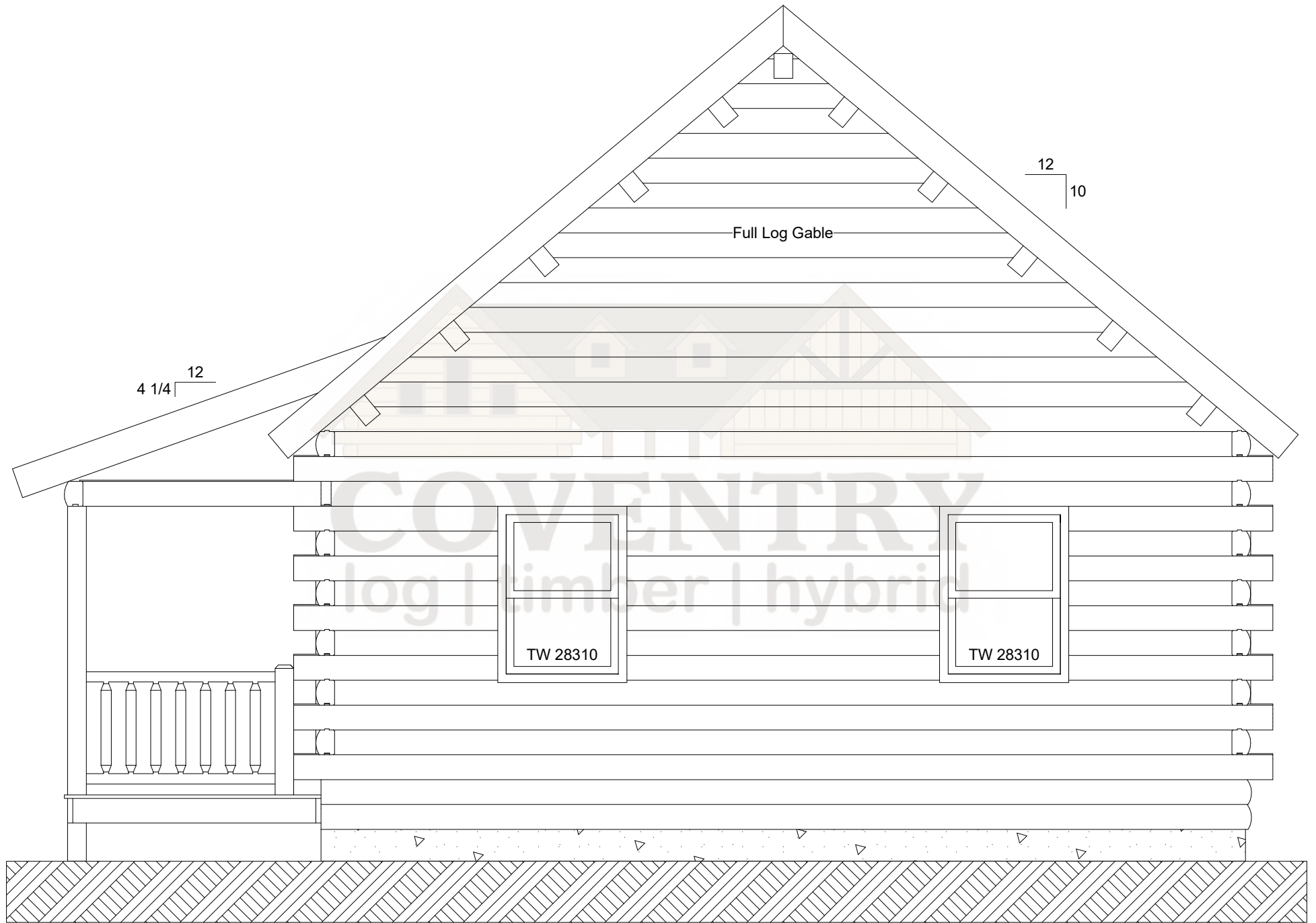


Juniper Second Floor Plan



Juniper Front Elevation

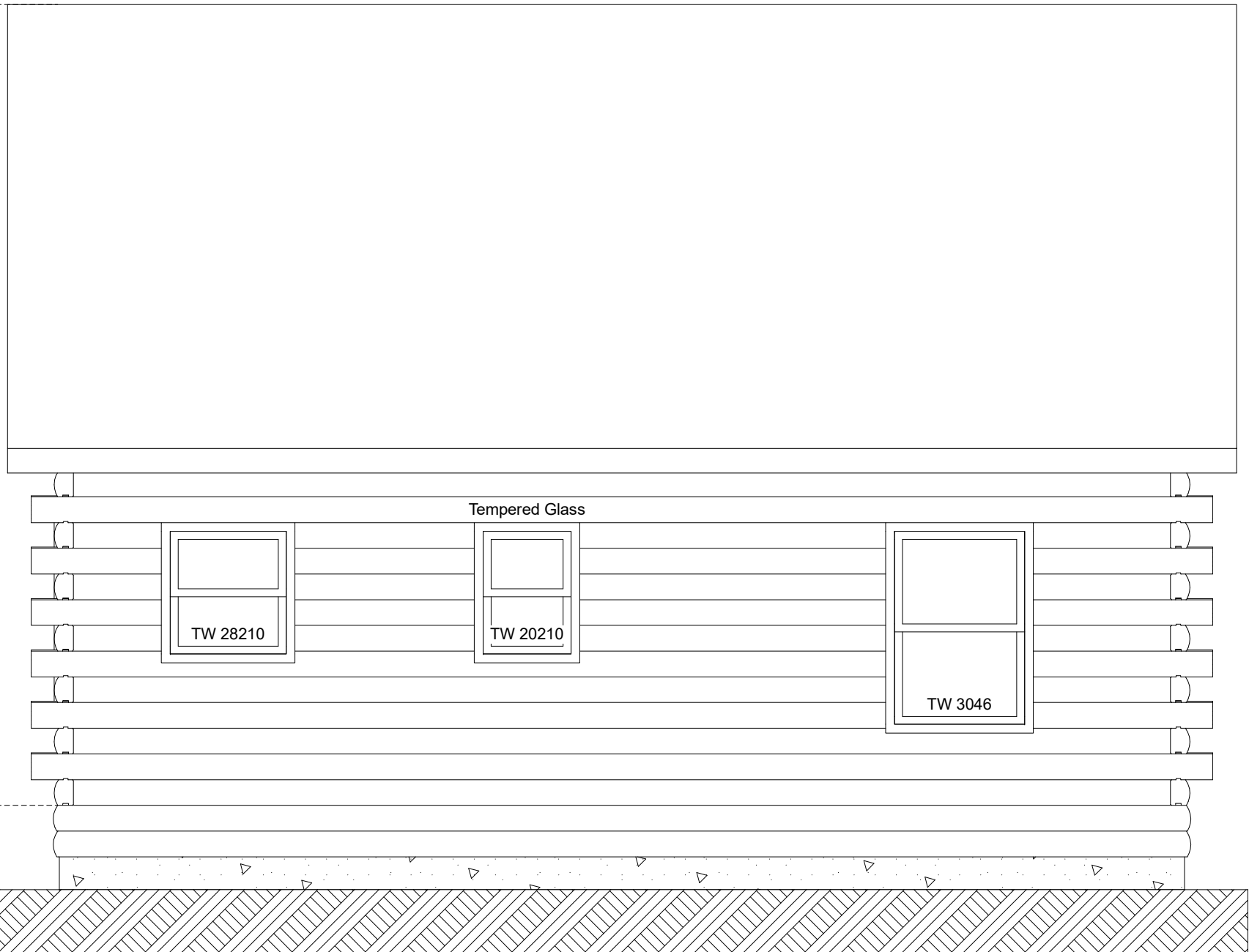
Note: Actual Pitch Of Roof Determined By Assembled Log Gable.
Pitch May Vary Slightly From That Noted On Plan.



Juniper Right Elevation

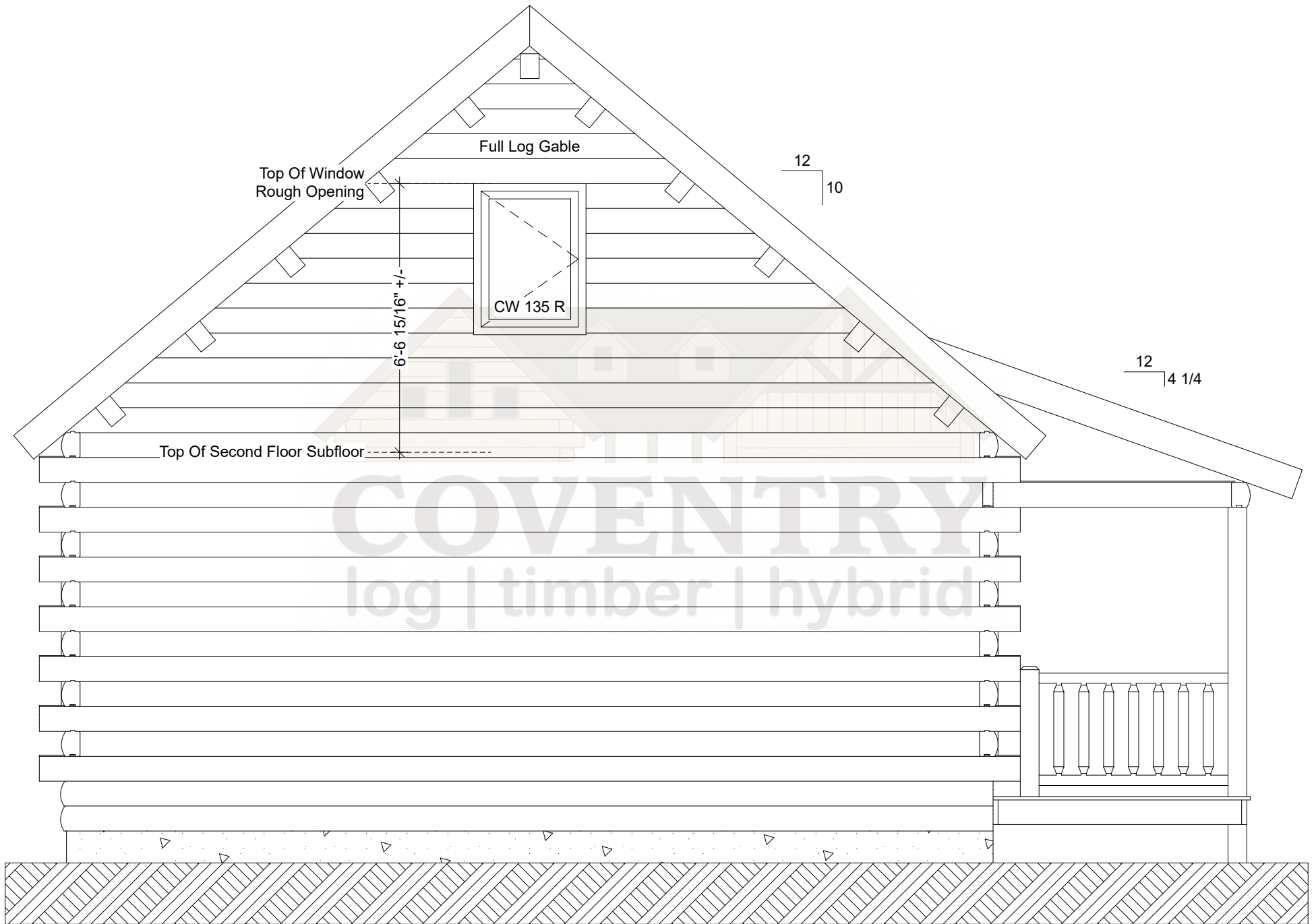
Peak Of House

18'-11 13/16" +/-



Juniper Rear Elevation

Note: Actual Pitch Of Roof Determined By Assembled Log Gable.
Pitch May Vary Slightly From That Noted On Plan.



Juniper Left Elevation