

# Cabin

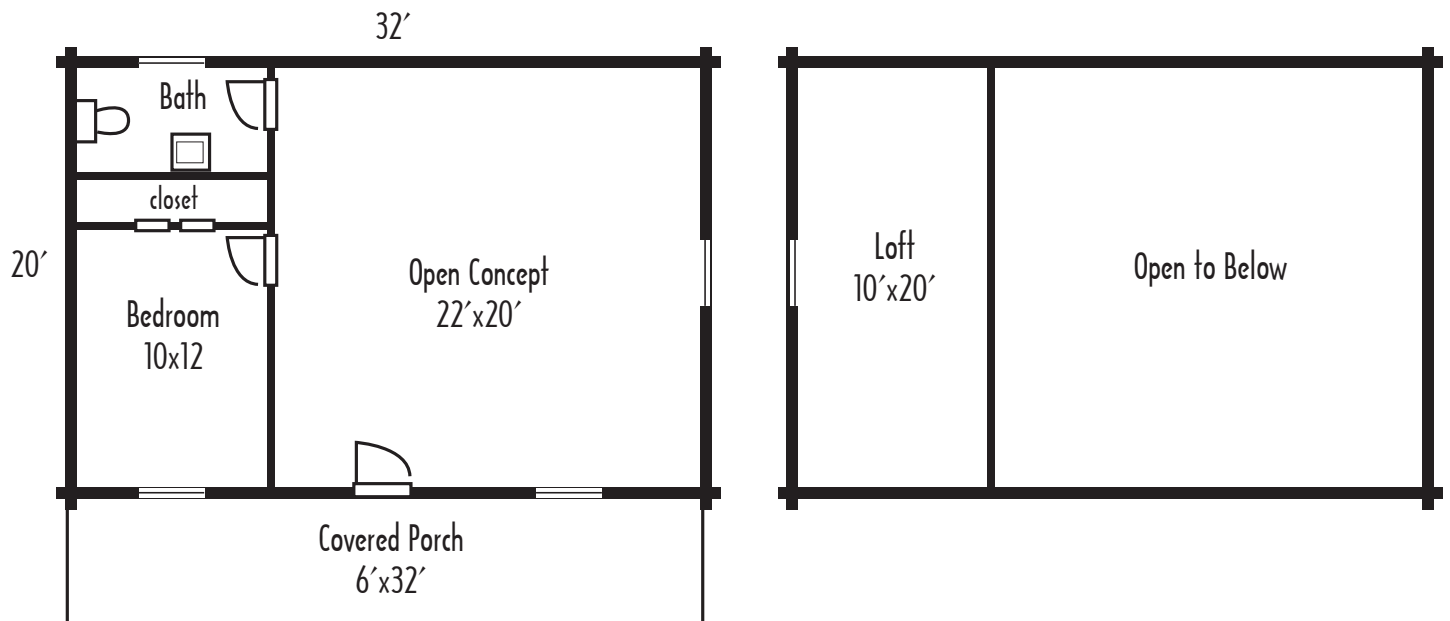
## The Adventurer

20' x 32' • 840 sq. ft.  
living area • 1 bedroom • 1 bath • loft area • porch

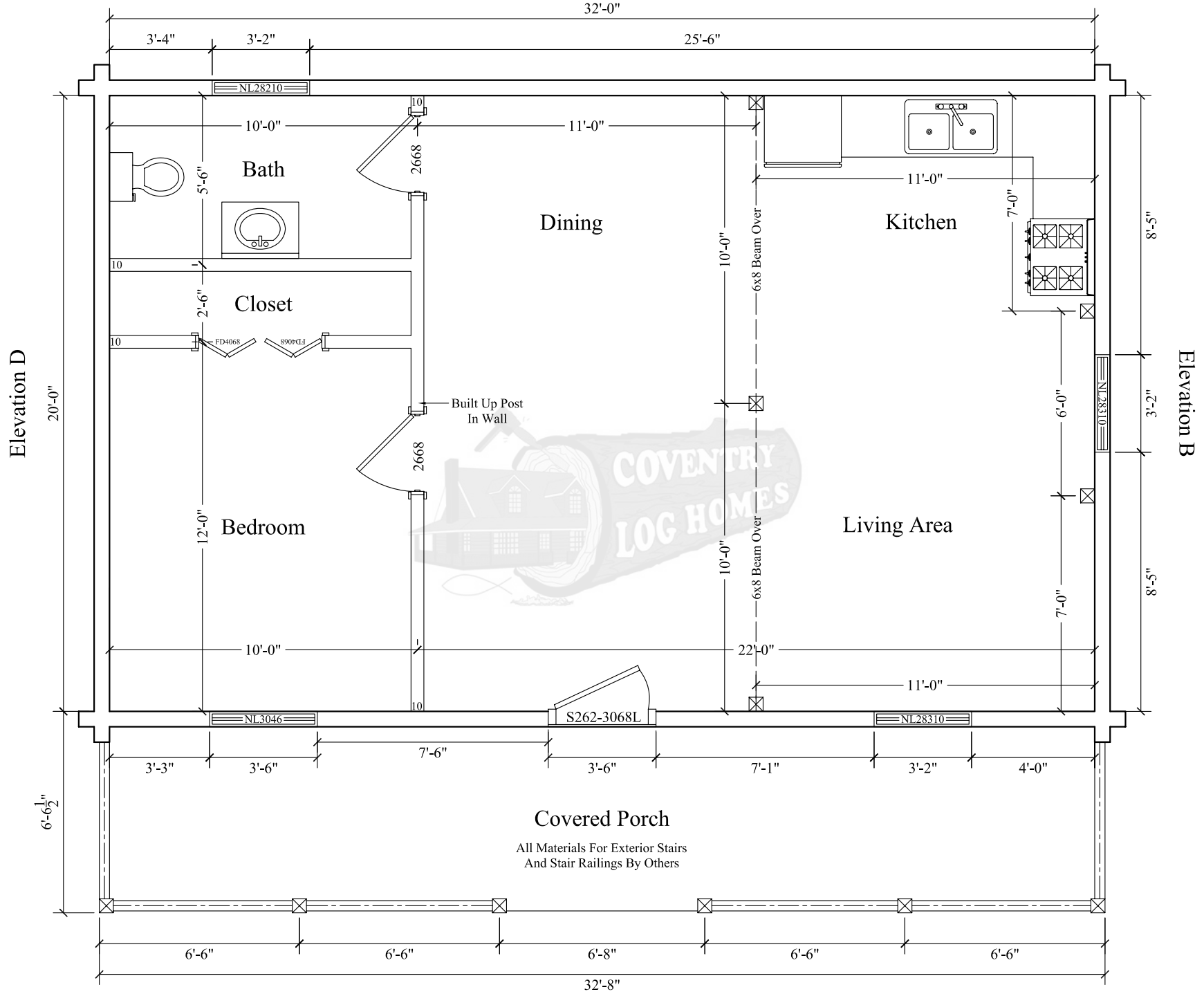
The Adventurer



Photo may vary from actual design.



Elevation C



Covered Porch

All Materials For Exterior Stairs  
And Stair Railings By Others

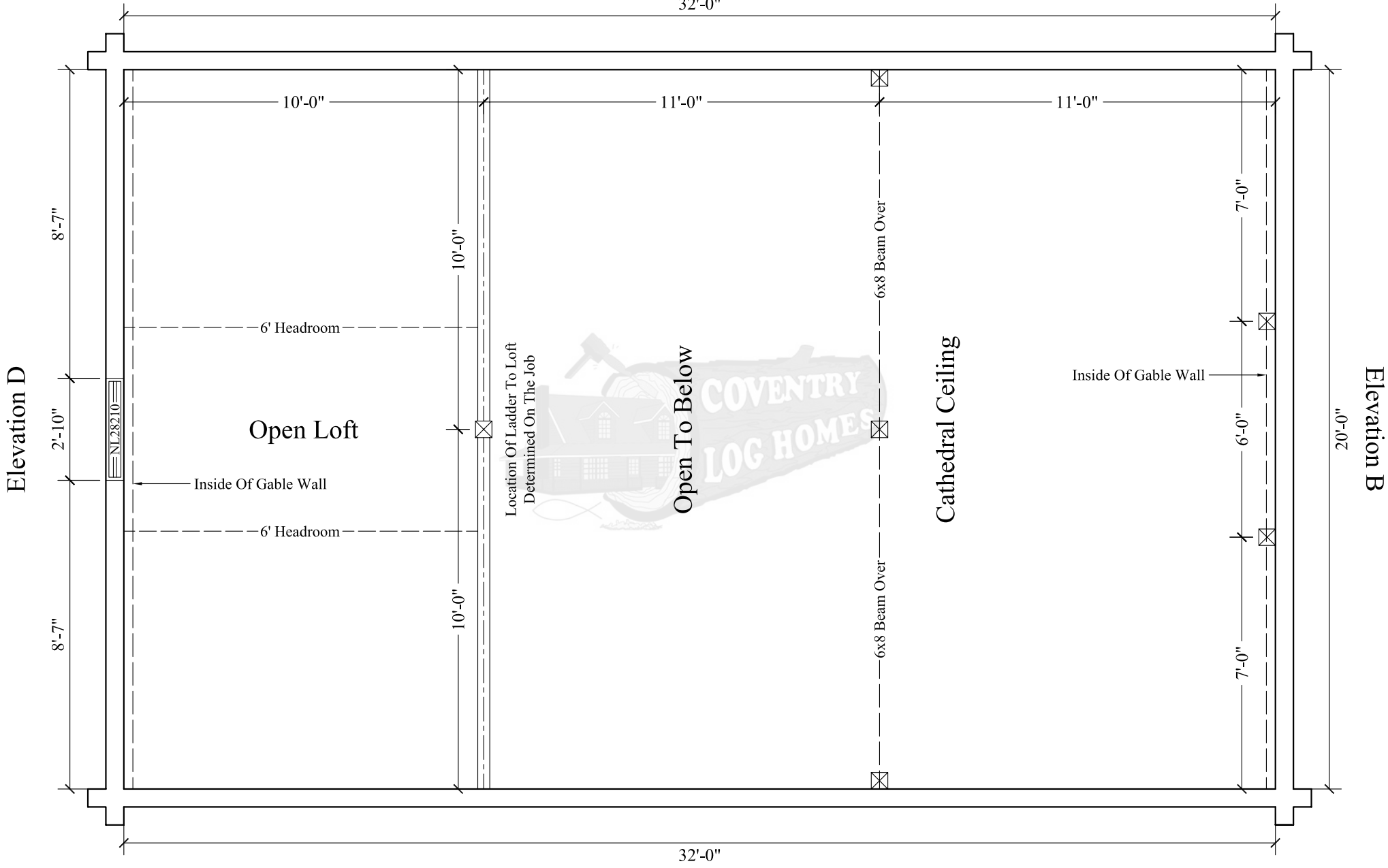
Adventurer

Elevation A

Floor Plan

Elevation C

32'-0"



Elevation D

8'-7"

2'-10"

8'-7"

Open Loft

Inside Of Gable Wall

6' Headroom

10'-0"

10'-0"

10'-0"

Location Of Ladder To Loft  
Determined On The Job

Open To Below



Cathedral Ceiling

6x8 Beam Over

6x8 Beam Over

Inside Of Gable Wall

7'-0"

6'-0"

7'-0"

20'-0"

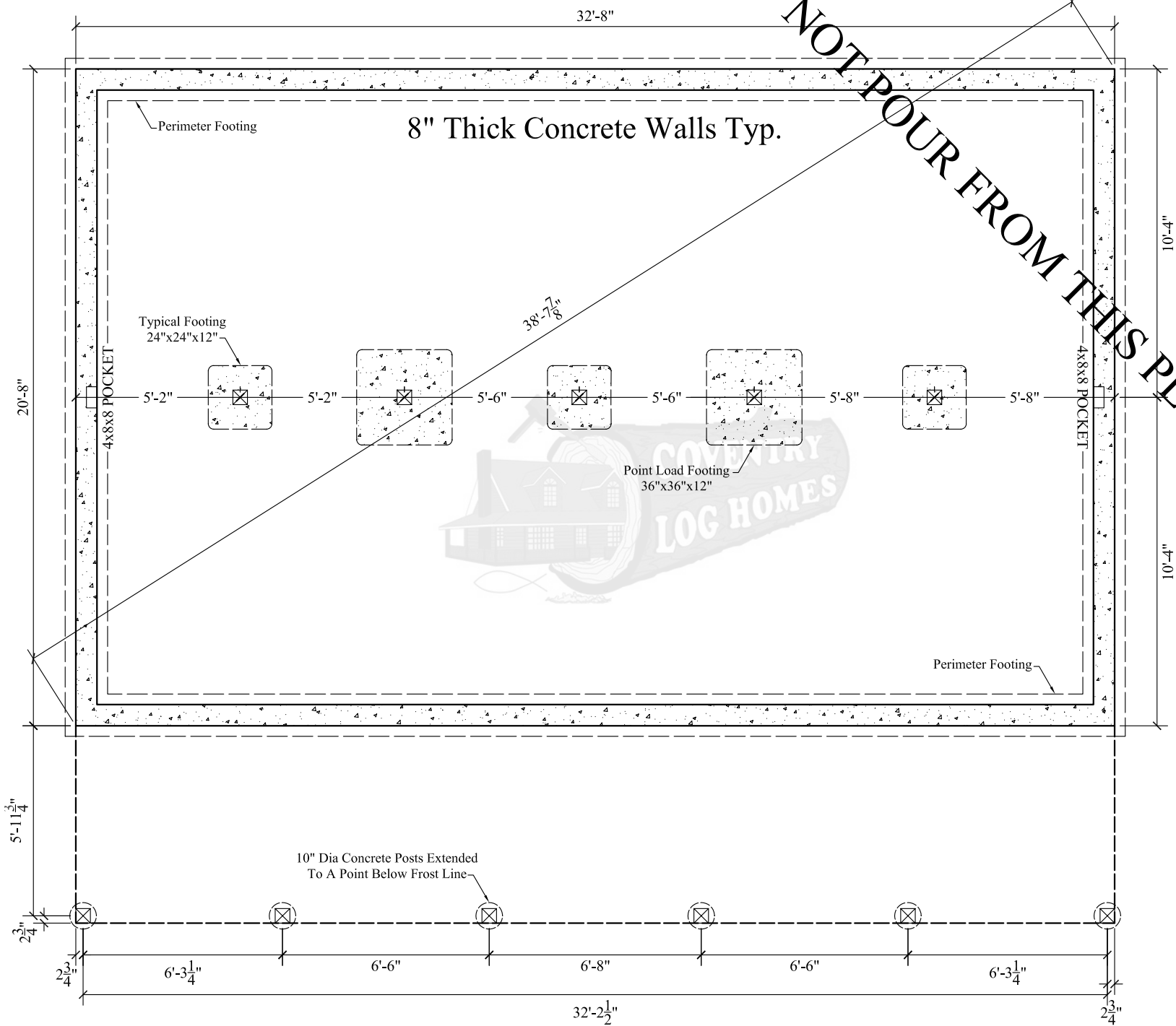
Elevation B

Adventurer

Elevation A

Loft Plan

**DO NOT POUR FROM THIS PLAN**



8" Thick Concrete Walls Typ.

Typical Footing  
24"x24"x12"

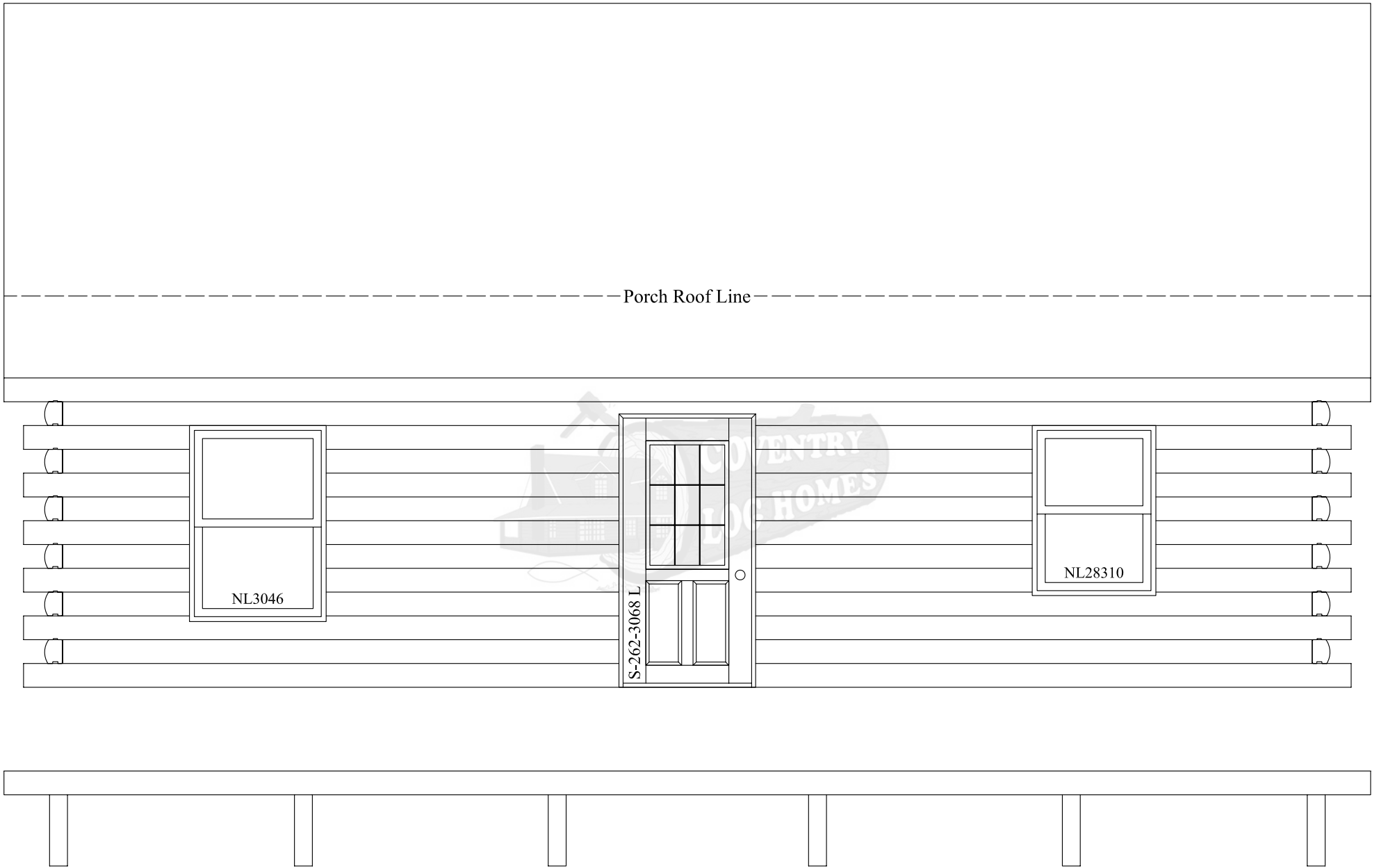
Point Load Footing  
36"x36"x12"

10" Dia Concrete Posts Extended  
To A Point Below Frost Line

Adventurer

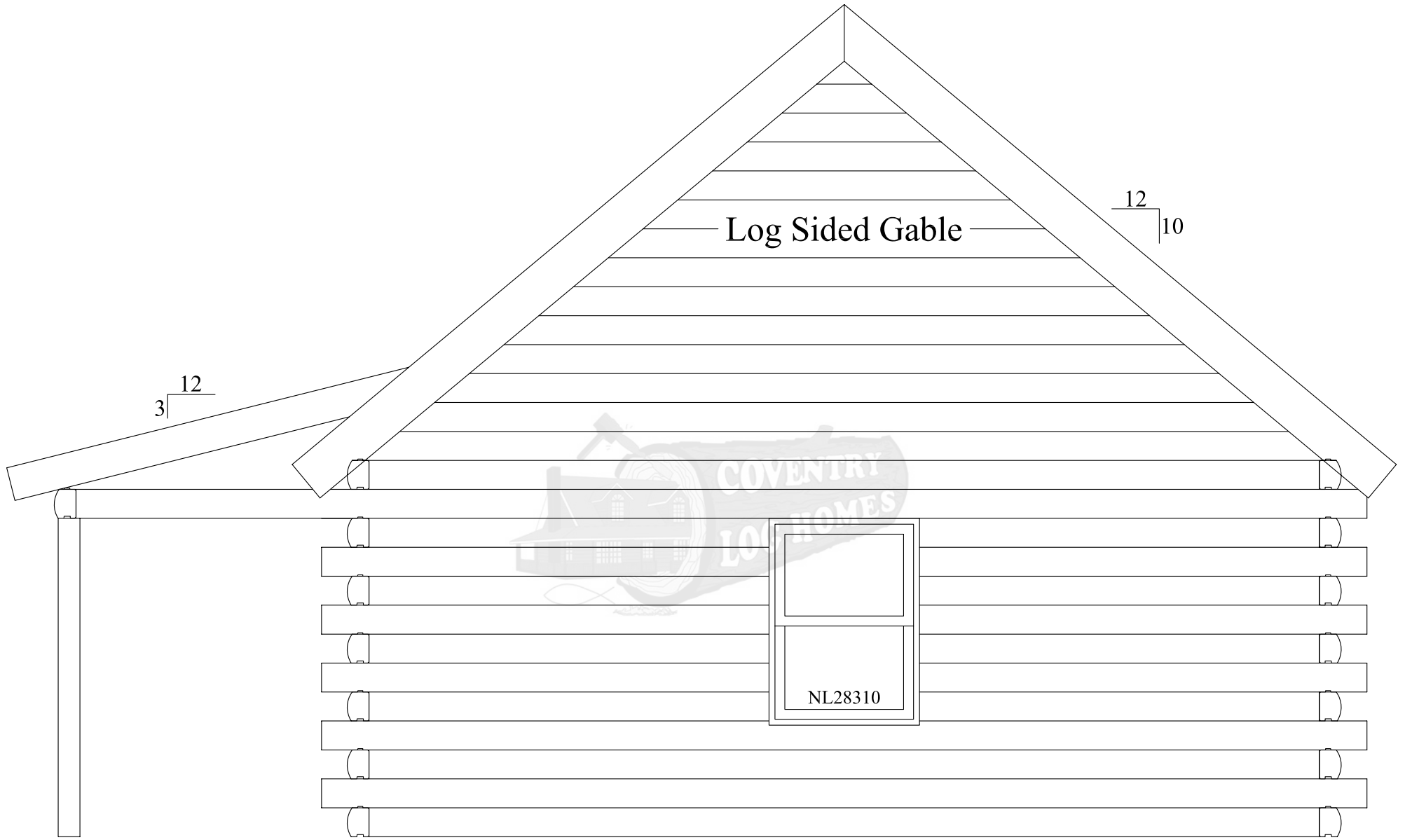
All Basement & Porch Supports By Others

Foundation Plan



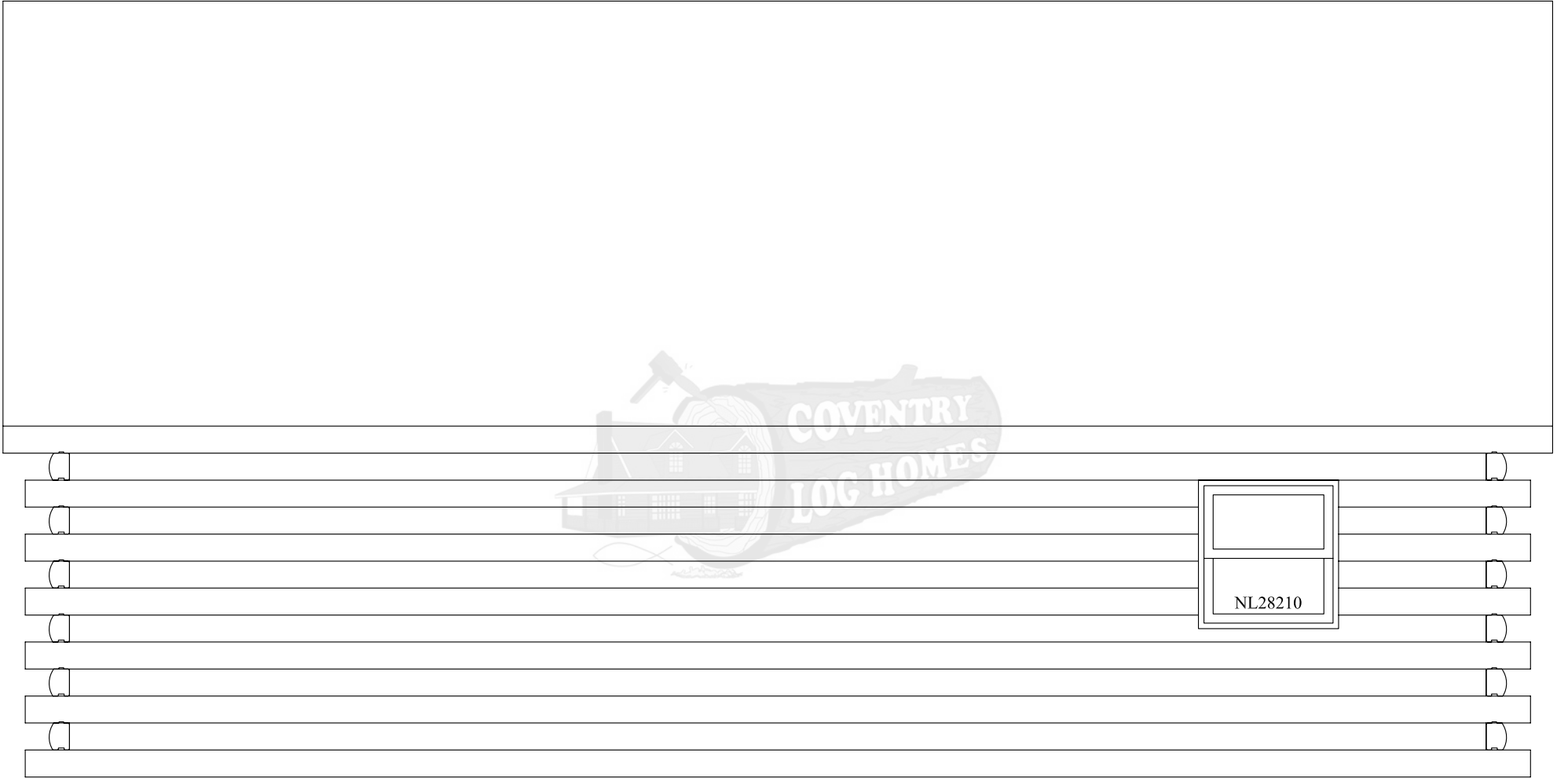
Adventurer

Elevation A



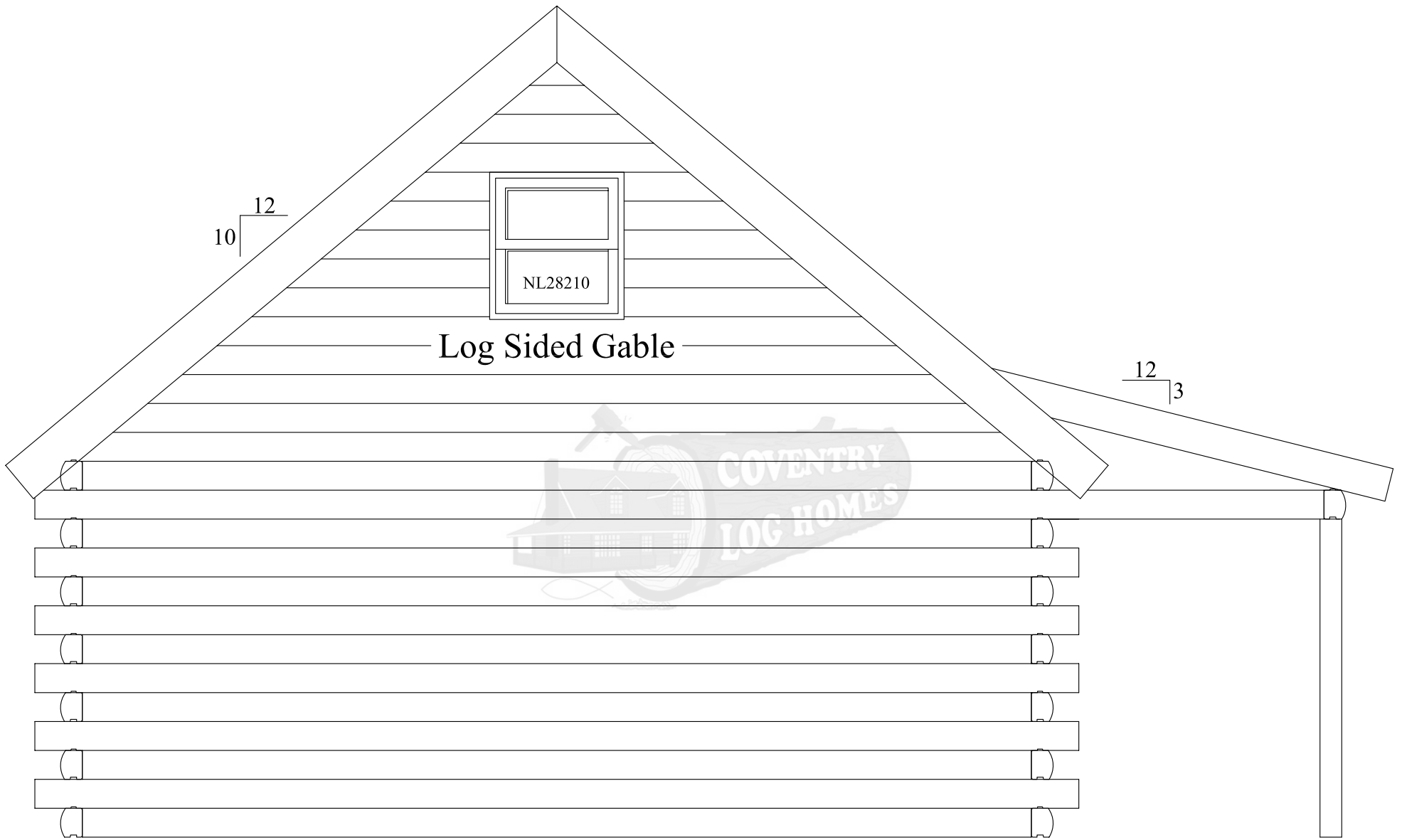
Adventurer

Elevation B



Adventurer

Elevation C



Adventurer

Elevation D