

Tradesman

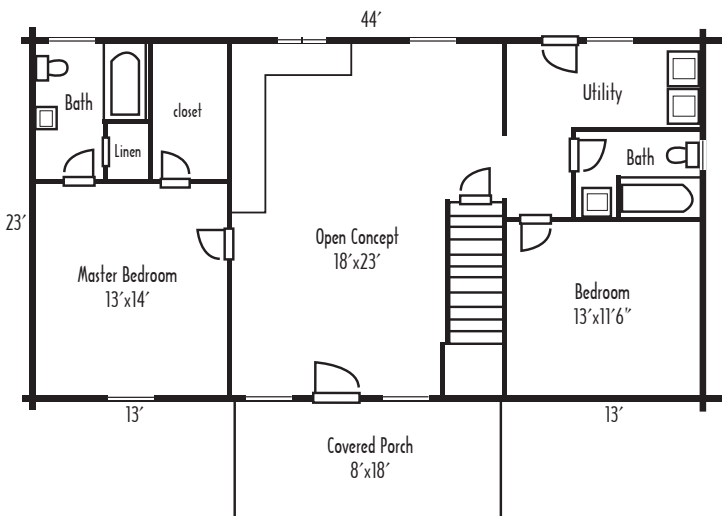
The Stoney Creek

23' x 44' • 1,012 sq. ft.
 living area • 2 bedrooms • 2 baths
 optional basement pkg. available

The Stoney Creek



Artist rendering may vary from actual design.



Optional Basement Pkg.

946 sq. ft.
 • 2 bedrooms • 1 bath
 • bonus room • great room

