

Tradesman

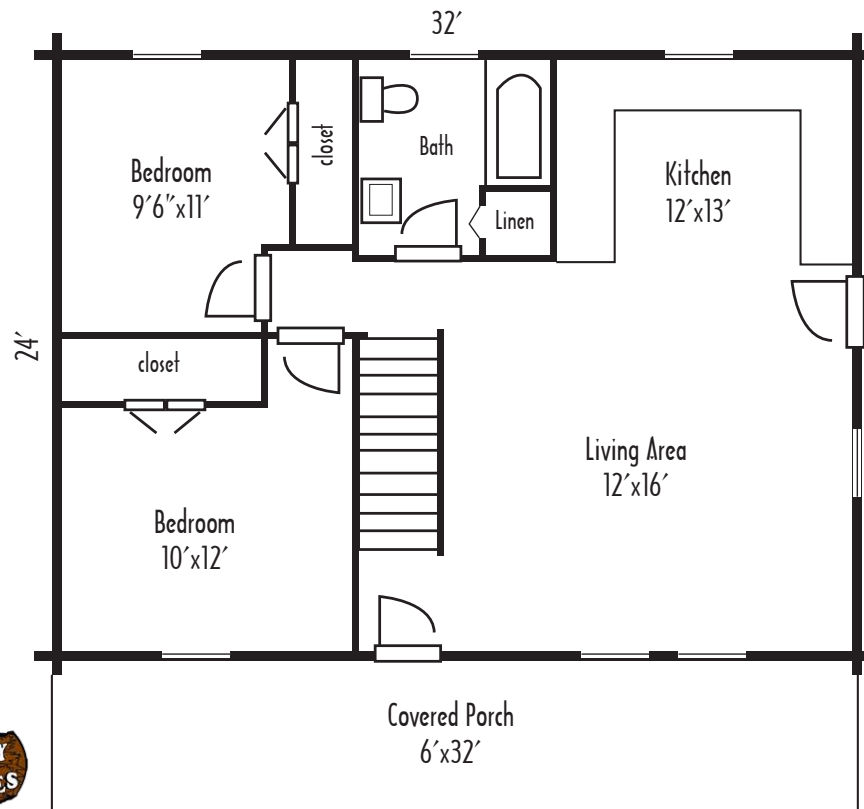
The Westport

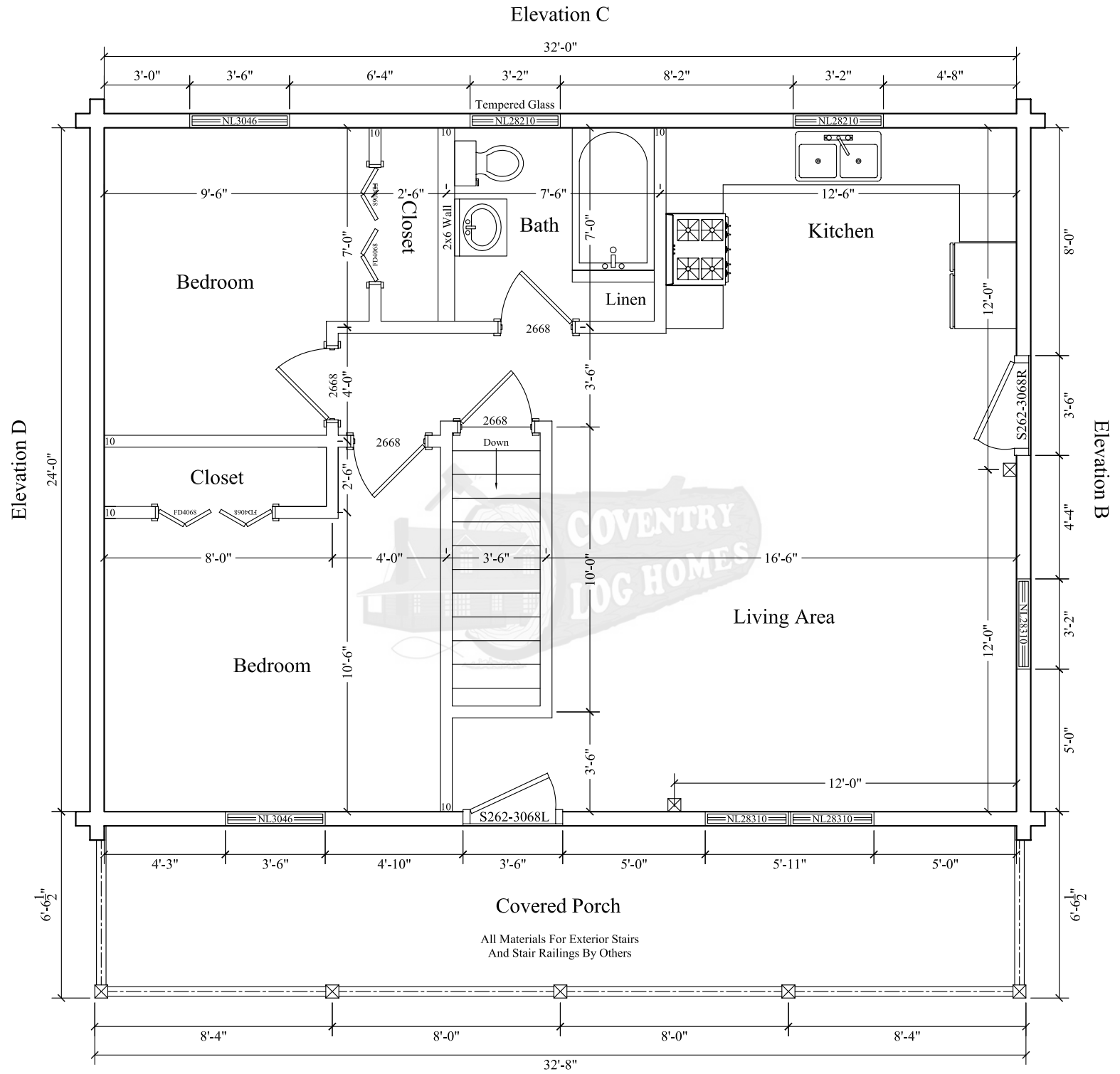
24' x 32' • 768 sq. ft. • living area • 2 bedrooms
1 bath • 6' x 32' porch

The Westport

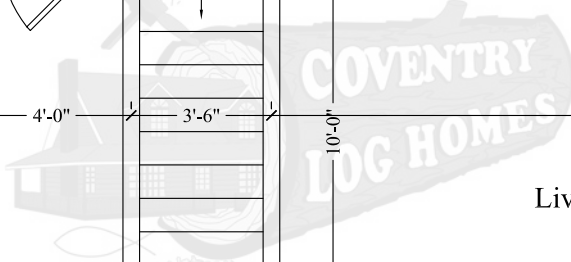


Photo may vary from actual design.

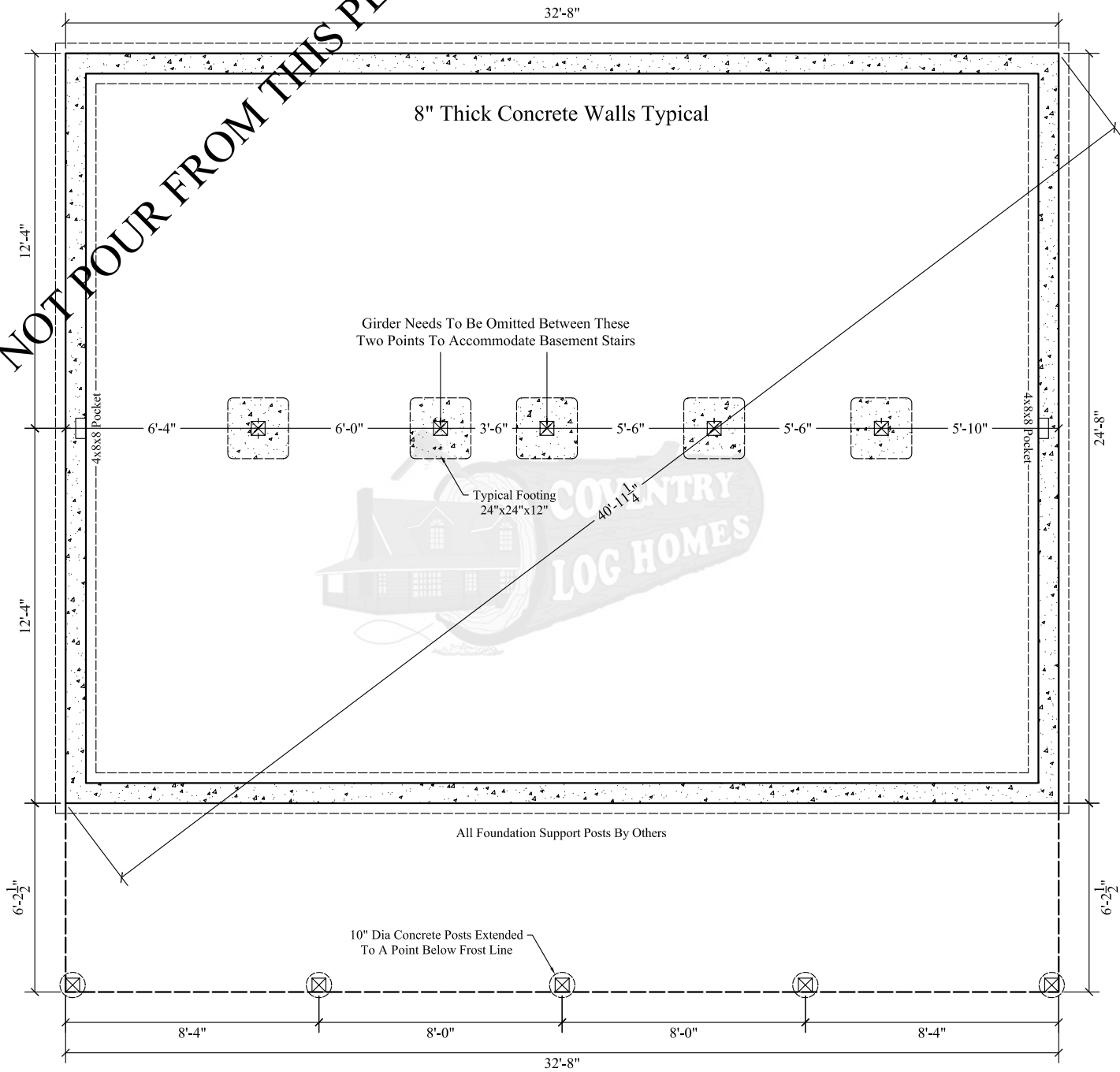




All Materials For Exterior Stairs
And Stair Railings By Others



DO NOT POUR FROM THIS PLAN



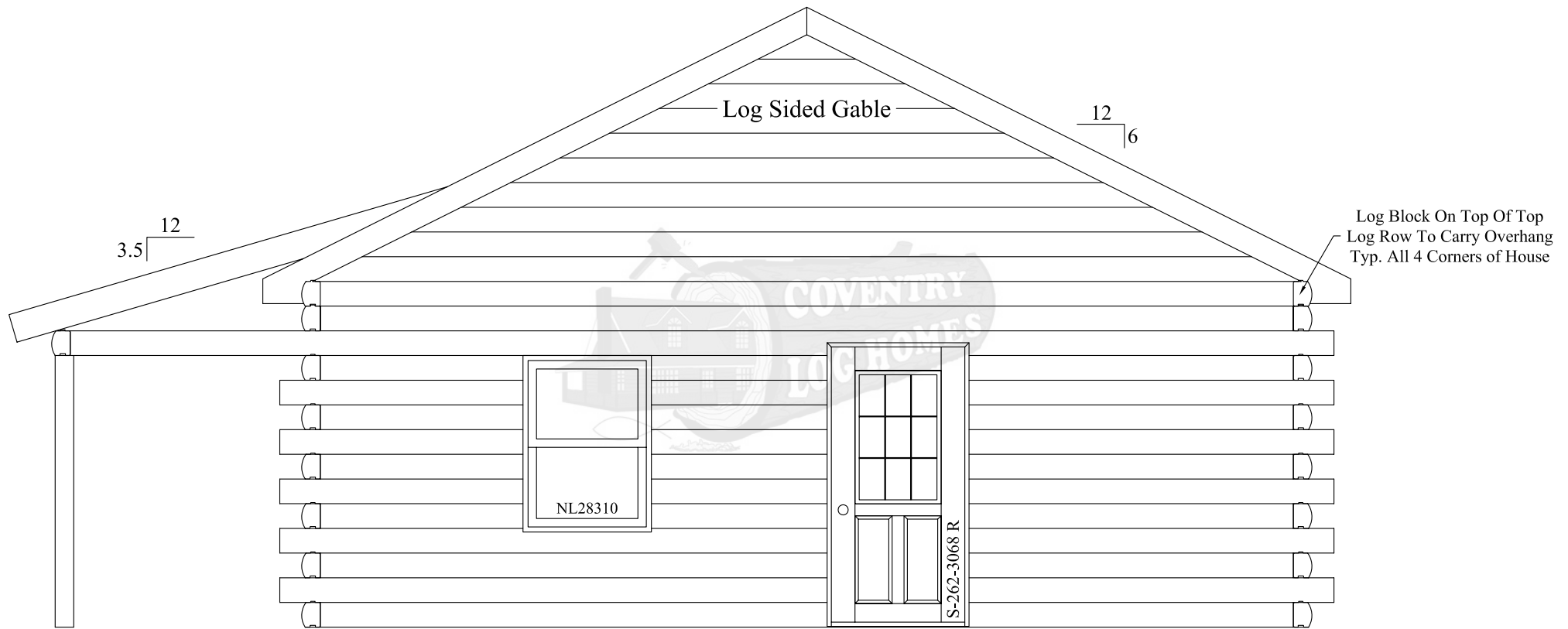
Westport

FOUNDATION PLAN



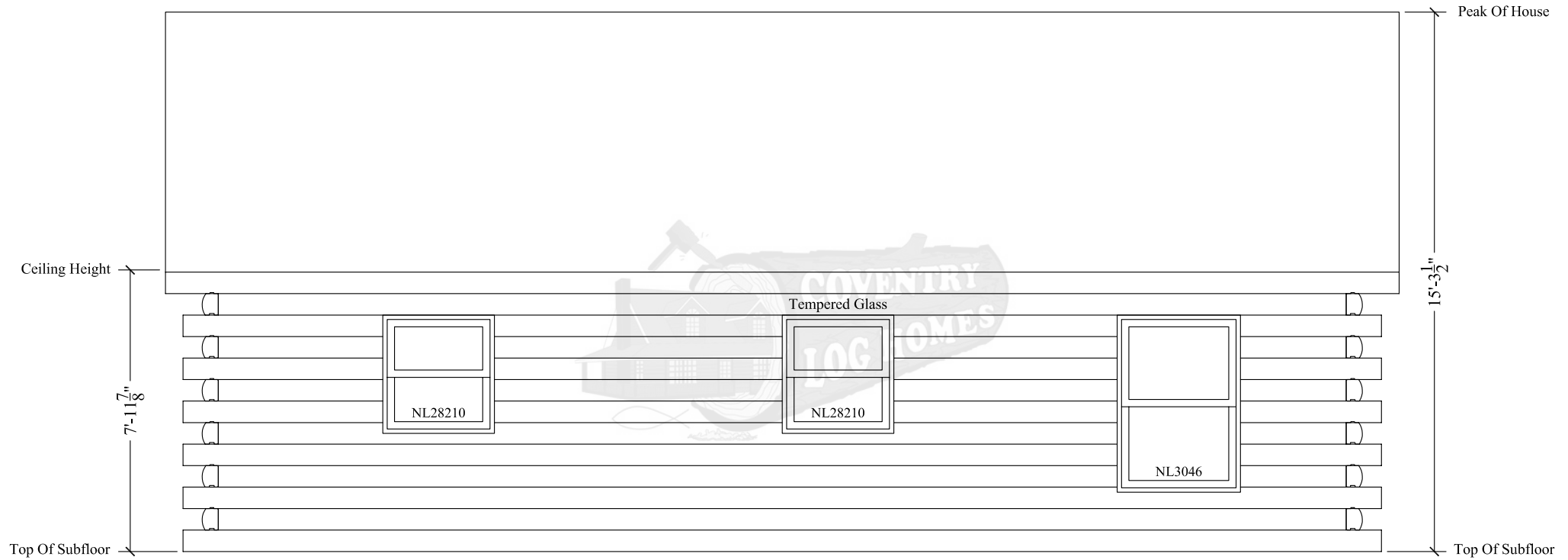
Westport

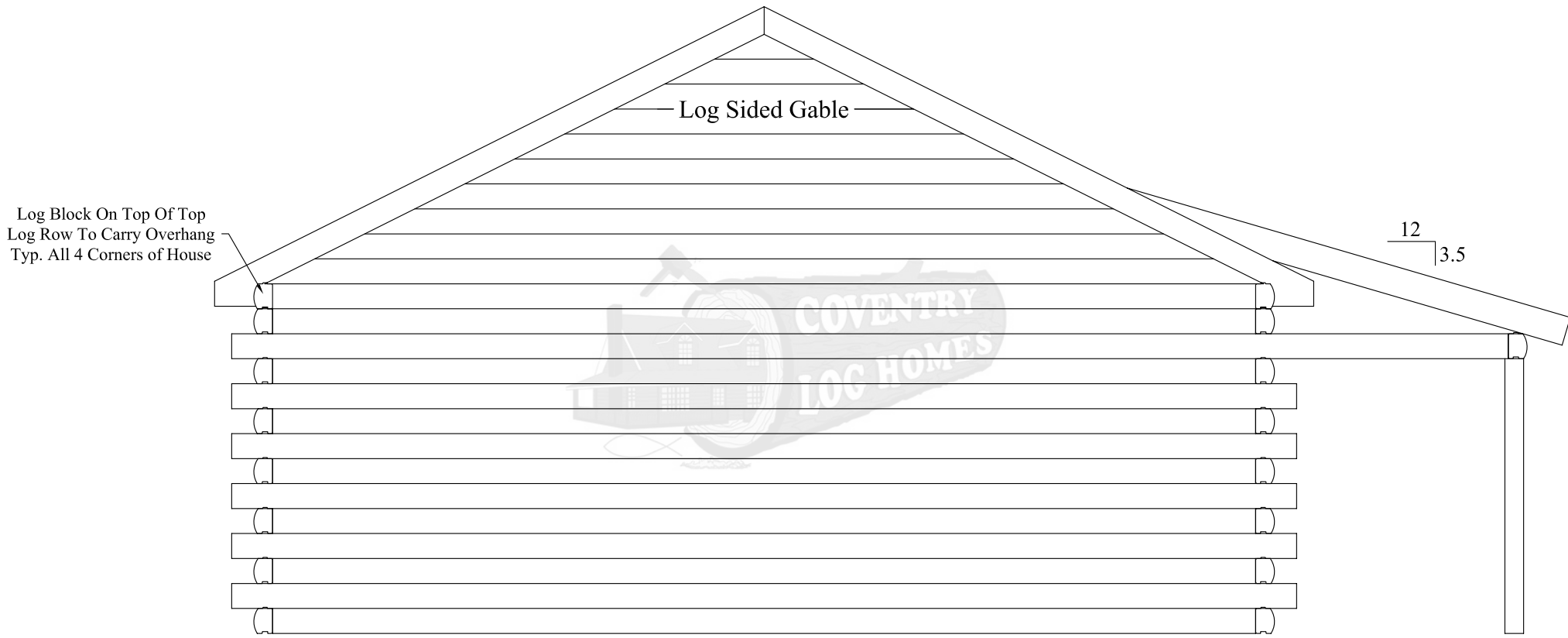
Elevation A



Westport

Elevation B





Westport

Elevation D