

**NEW  
MODEL**  
the  
**Lakeside**

**ONLY 3 AVAILABLE**

**Introductory Prices**

TRADESMAN STYLE

6x8 LOG

Retails @ \$81,050

**\$68,000**

8x8 LOG

Retails @ \$87,550

**\$74,000**



**FEATURES:**

- 1st Floor Living
- Laundry Room
- Master Ensuite
- Cathedral Ceiling
- Covered Porch
- 24x40
- 2 Bdrm/2 Bath
- 960 Sq. Ft.

[www.coventryloghomes.com](http://www.coventryloghomes.com)

**COVENTRY LOG HOMES, INC.**

108 South Court Street • Woodsville, New Hampshire 03785

1-800-308-7505 | 1-603-747-8177 | [info@coventryloghomes.com](mailto:info@coventryloghomes.com)



**COVENTRY**  
log | timber | hybrid

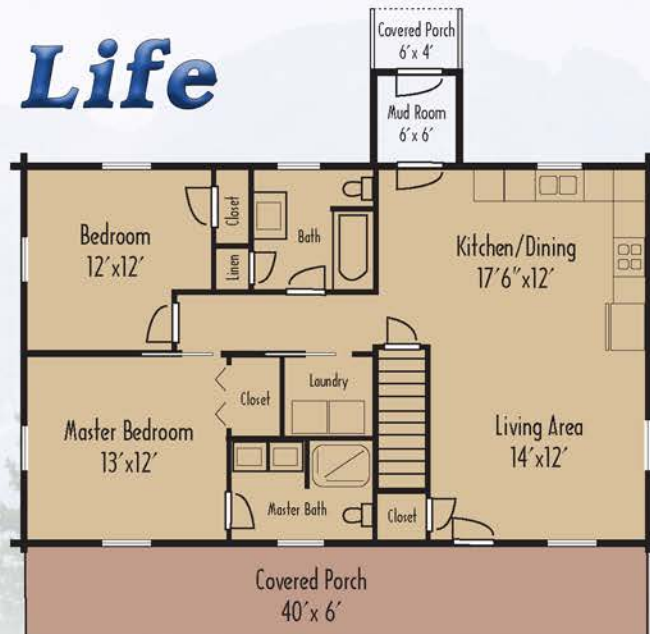


# Live Your Best Life

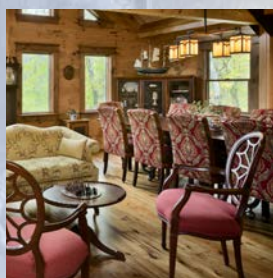
Added Option:  
6x6 Log Sided Mud Room  
with a 4x6 Porch

Sale Price

**\$6,885**



- **Unlimited Technical Support • Three Sets of Construction Plans**
  - **Stamped Engineered Plans If Needed**
  - **\$1 Shipping in Eastern and Central Time Zones**



## SUB FLOOR

- Sill Seal • Pressure Treated Sill
- Perimeter Box • Girder Beam
- 2x10 Floor Joists • Support Joists
- Blocking • 3/4" T&G Engineered Sheathing • Stair Stringers/Treads
- Basement Stair Landing
- Skirt-board Log Siding



## LOG WALL SYSTEM

- Kiln-Dried Logs • Milled Tongue & Groove Sealing System • Precut Log Walls w/Window & Door Openings
- Precut Log Corner Systems • Precut Gable Angle Cuts
- Graded Logs • Sill Seal • Starter Strip • Caulking • Foam Gasket • Corner Sealant • Pre-cut Splines • Screw Fasteners



## DORMERS N/A

- Log Siding
- Framing
- Sheathing Options
- T&G Pine Interior Walls



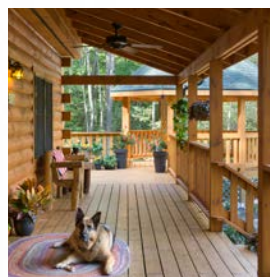
## WINDOWS & DOORS

- Andersen Low-E HP Tilt-Wash 400 Series Windows with Screens • Therma-Tru Fiberglass Doors • All Door Hardware
- Window & Door Jambs • Window/Door Headers • Exterior Trim Boards • Interior Trim Boards



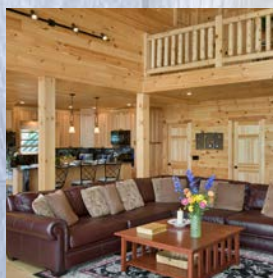
## LOFT N/A

- Joists • Ledger • Girder
- Sheathing Options • Railings
- Stair Stringers • Stair Treads
- Tie Beams • Stair Landing
- Supports • Blocking



## PORCH

- PT Joists • PT Ledger • PT Double Box • PT Flooring
- Railing System Options • Porch & Newell Post Options
- Exposed Beam Rafter • T&G Ceiling • Roof Sheathing
- Rafter Nail • Fascia • Triflex Membrane • Shingles



## INTERIOR

- Studs • Plumbing Wall Framing
- Blocking • Plates
- Pilaster Studs
- T&G Pine Walls and Ceiling
- Support Posts • Wall Stiffeners
- Pre-hung Interior Doors
- Locksets



## ROOF SYSTEM

- Shingles • **Common Materials:** Sheathing Options
- Starter & Cap • Triflex Membrane
- Fascia • T&G Pine Interior Ceiling • Soffit
- **Standard Roof System:** 2x12 Rafters • LVL Ridge Beam
- Rafter Nail • Exposed Tie Beams • Roof Supports