

ARE YOU A SAVVY SHOPPER?

**This Deal Is For You!**

# DIY SPECIAL

## Woodland

Tradesman Design



**LIMITED TIME OFFER**

**No other discounts apply**

**Order w/20% Deposit by:**

May 31, 2022

**Take Delivery by:** Dec. 31, 2022

## Log Wall Package

# \$49,995

6x8 "D" Log

For 8x8 "D" Log  
ADD

# \$8,000

### **BENEFITS:**

Pre-cut Kiln-dried log home package with full construction plans. **Plus a complete materials list** to allow you to shop locally for the best deals.



**COVENTRY**  
log | timber | hybrid

## COVENTRY LOG HOMES, INC.

108 South Court Street • Woodsville, New Hampshire 03785  
[www.coventryloghomes.com](http://www.coventryloghomes.com) • [info@coventryloghomes.com](mailto:info@coventryloghomes.com)

Call Our Log Home Experts

**1-800-308-7505**



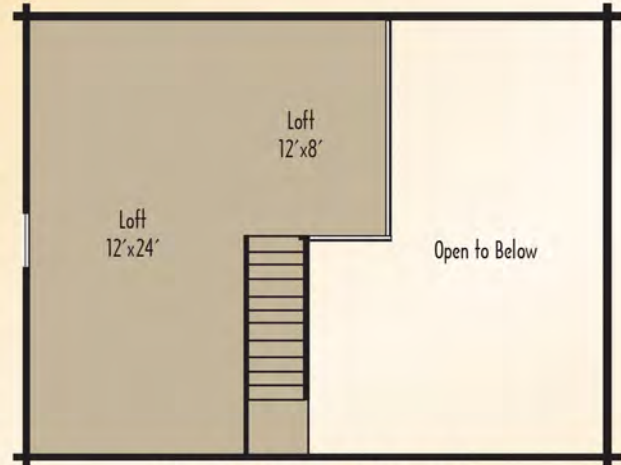
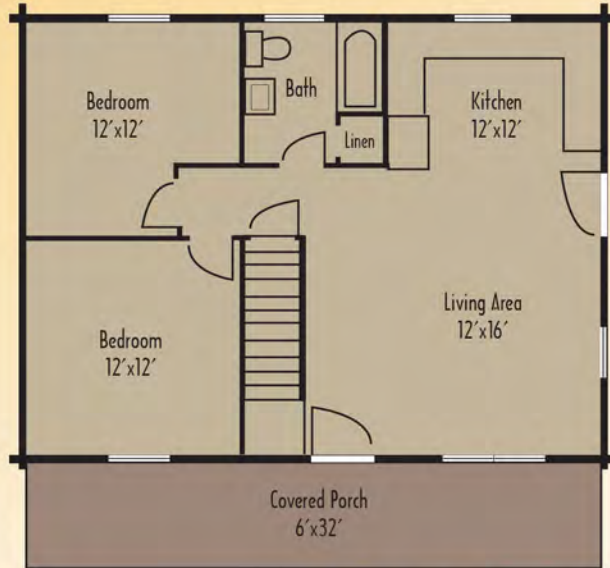
# Woodland



BACK VIEW



INTERIOR

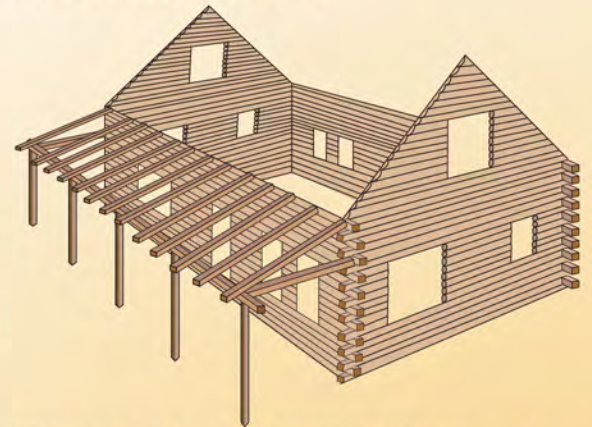
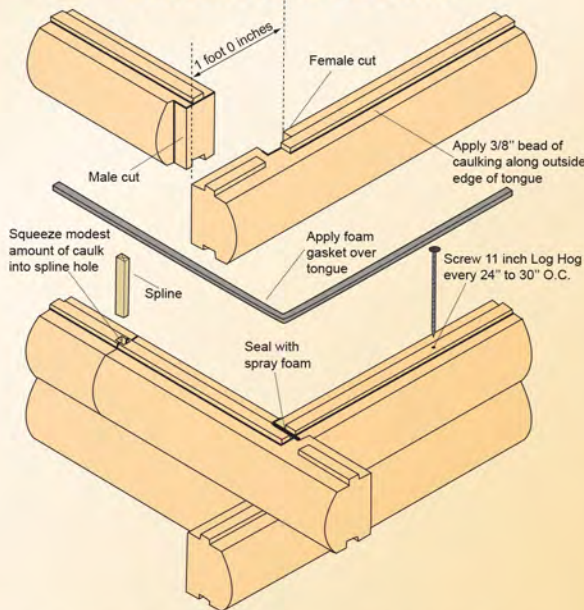


**24x32 • 1,140 sq ft**  
2 bedrooms • 1 bath

## SEALING SYSTEM



**STANDARD**  
"D" Log  
6x8 • 8x8



**The Pre-Cut Log Wall Package**—We provide you with the necessary mill items that are pre-cut to your design. This allows you to shop for your best deal on dimensional lumber and materials that can be purchased at your local lumber yard.



**COVENTRY**  
log | timber | hybrid

**Our factory direct**, pre-cut, lettered and numbered logs fit perfectly using our fastening system which has consistently earned our tested homes a 5 plus star EnergyStar rating.

**COVENTRY LOG HOMES, INC.**

108 South Court Street • Woodsville, New Hampshire 03785  
www.coventryloghomes.com • info@coventryloghomes.com

Call Our Log Home Experts  
**1-800-308-7505**