



# 2025 April Special

# 8% OFF

All Packages

**Details:**

Order with 20% Deposit by **April 30, 2025**

Delivery by **December 31, 2025**

All Our Model Prices Are Posted On  
[www.coventryloghomes.com](http://www.coventryloghomes.com)

\$1 Shipping in Eastern and Central Time Zones



**COVENTRY**  
log | timber | hybrid

**COVENTRY LOG HOMES, INC.**

108 South Court Street • Woodsville, New Hampshire 03785

[www.coventryloghomes.com](http://www.coventryloghomes.com) • [info@coventryloghomes.com](mailto:info@coventryloghomes.com)

Call Our Log Home Experts

**1-800-308-7505**

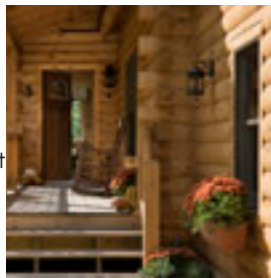


- Unlimited Technical Support
- Three Sets of Construction Plans
- Stamped Engineered Plans If Needed



### SUB FLOOR

- Sill Seal • Pressure Treated Sill
- Perimeter Box • Girder Beam
- Joists • Support Joists • Blocking
- 3/4" T&G Engineered Sheathing
- Stair Stringers/Treads • Basement Stair Landing • Skirt-board Log Siding



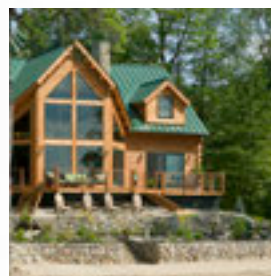
### LOG WALL SYSTEM

- Kiln-Dried Logs • Milled Tongue & Groove Sealing System • Precut Log Walls w/Window & Door Openings
- Precut Log Corner Systems • Precut Gable Angle Cuts
- Graded Logs • Sill Seal • Starter Strip • Caulking • Foam Gasket • Corner Sealant • Pre-cut Splines • Screw Fasteners • Log Siding for Gables • Framing for Log Sided Gables • T&G Pine for Interior Gables • Wall Sheathing for Log Sided Gables



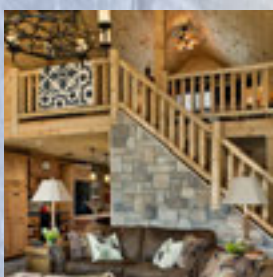
### DORMERS

- Full Log Or Log Siding with Corner Extension Option
- Framing
- Sheathing Options
- T&G Pine Interior Walls



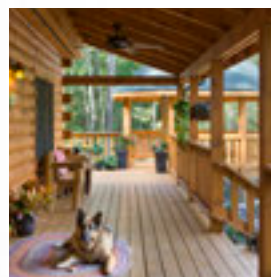
### WINDOWS & DOORS

- Andersen Low-E HP Tilt-Wash 400 Series Windows with Screens • Custom Gable Glass per plan
- Therma-Tru Fiberglass Doors • Andersen Patio Door/Glider with Screens • All Door Hardware • Window & Door Jamb • Window/Door Headers • Exterior Trim Boards • Interior Trim Boards



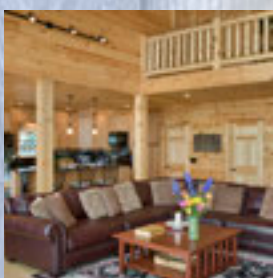
### LOFT

- Joists • Ledger • Girder
- Sheathing Options • Railings
- Stair Stringers • Stair Treads
- Tie Beams • Stair Landing
- Supports • Blocking



### PORCH & DECK

- PT Joists • PT Ledger • PT Double Box • PT Flooring
- Railing System Options • Porch & Newell Post Options
- Exposed Beam Rafter • T&G Ceiling • Roof Sheathing Options • Rafter Nailers • Fascia • Roof Membrane
- Architectural Shingles or Metal Roof Option



### INTERIOR

- Studs • Plumbing Wall Framing
- Blocking • Plates
- Pilaster Studs
- T&G Pine Walls and Ceiling
- Support Posts • Wall Stiffeners
- Pre-hung Interior Doors
- Locksets



### ROOF SYSTEM

- Architectural Shingles or Metal Roof Option • **Common Materials:** Sheathing Options • Starter & Cap
- Roof Membrane • Fascia • T&G Pine Interior Ceiling
- Soffit • **Standard Roof System:** Rafters • LVL Ridge Beam
- Rafter Nailers • Exposed Tie Beams • Roof Supports
- Rigid Insulation (Cabin Series) **Craftsman Roof System:** Arms • Purlins (Precut) • Webbing • Truss Cords • Steel Plates • Strapping